

MIAMI-DADE ART IN PUBLIC PLACES

05/09/2025



NORTH BAY VILLAGE
VILLAGE HALL & FIRE STATION 27

**THIS PACKAGE IS MEANT TO IDENTIFY THE POSSIBLE AREAS
FOR THE PROPOSED ART IN PUBLIC SPACES INSTALLATIONS**



NORTH BAY VILLAGE
VILLAGE HALL & FIRE STATION 27



NORTH BAY VILLAGE
VILLAGE HALL & FIRE STATION 27

EAST PERSPECTIVE

AIPP INSTALLATION - FIRST FLOOR ENTRY LOBBY

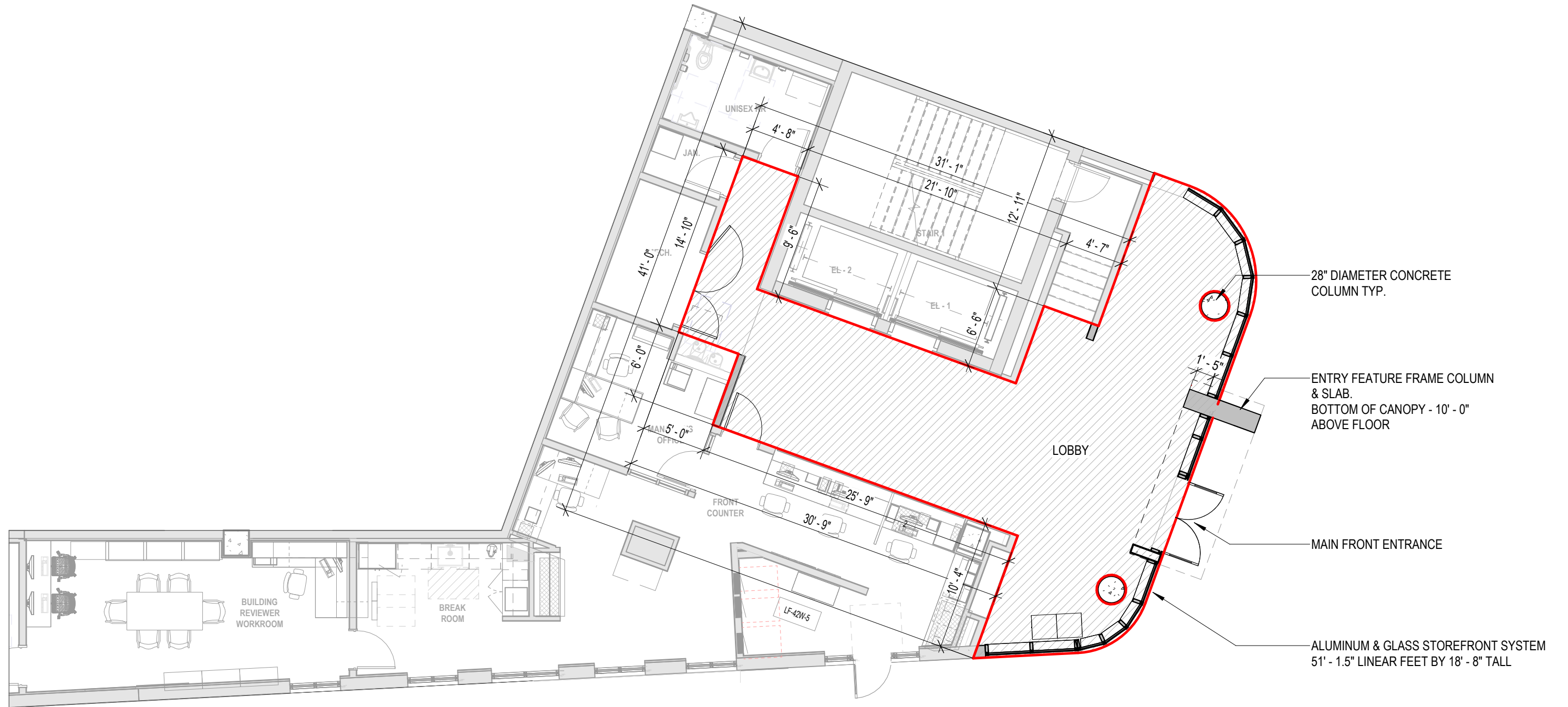


NORTH BAY VILLAGE
VILLAGE HALL & FIRE STATION 27



NORTH BAY VILLAGE
VILLAGE HALL & FIRE STATION 27

FIRST FLOOR ENTRY LOBBY INTERIOR PERSPECTIVE



28" DIAMETER CONCRETE COLUMN TYP.

ENTRY FEATURE FRAME COLUMN & SLAB. BOTTOM OF CANOPY - 10' - 0" ABOVE FLOOR

MAIN FRONT ENTRANCE

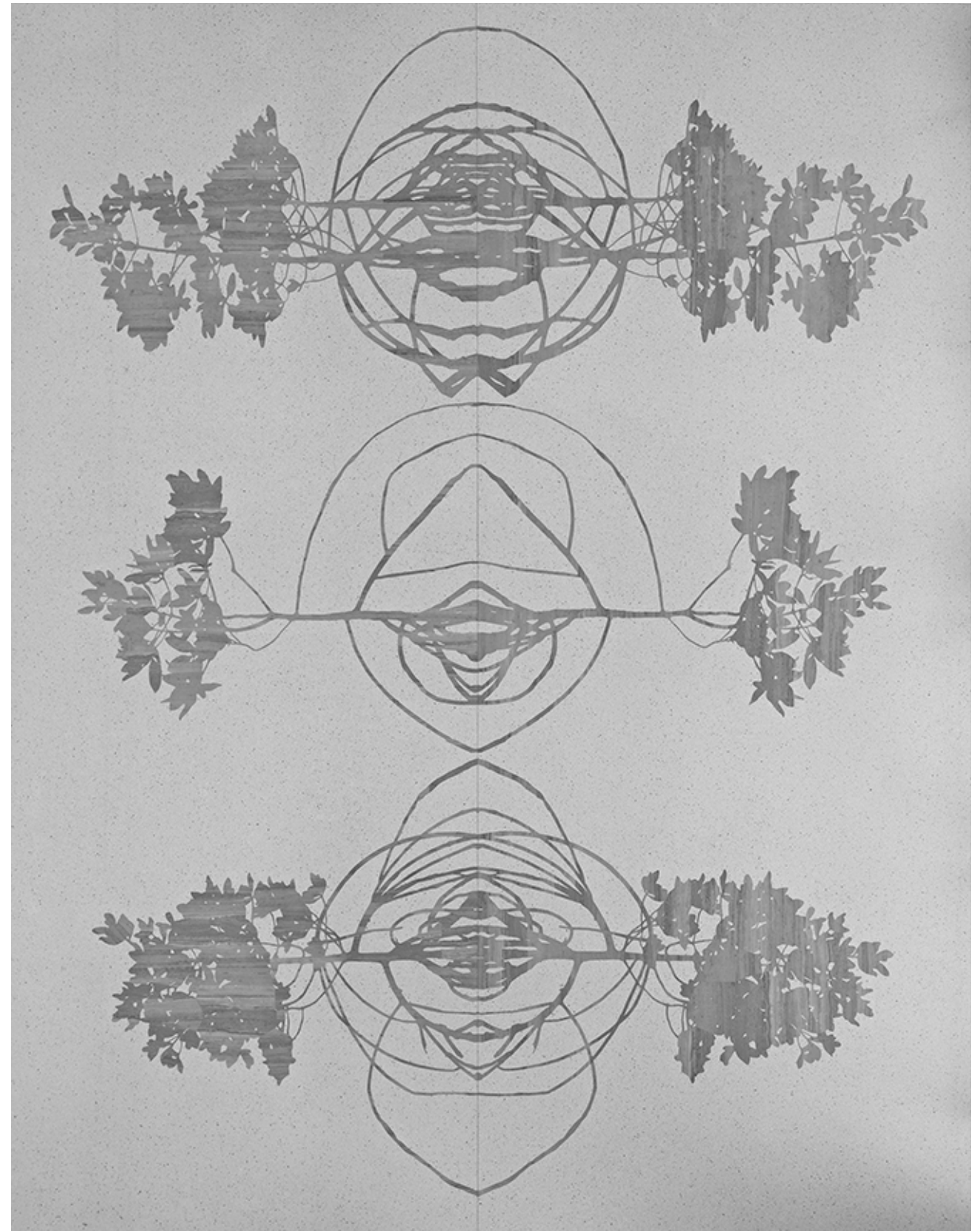
ALUMINUM & GLASS STOREFRONT SYSTEM 51' - 1.5" LINEAR FEET BY 18' - 8" TALL

PROPOSED ART INSTALLATION FLOOR AREA APPROXIMATELY : 798 SF



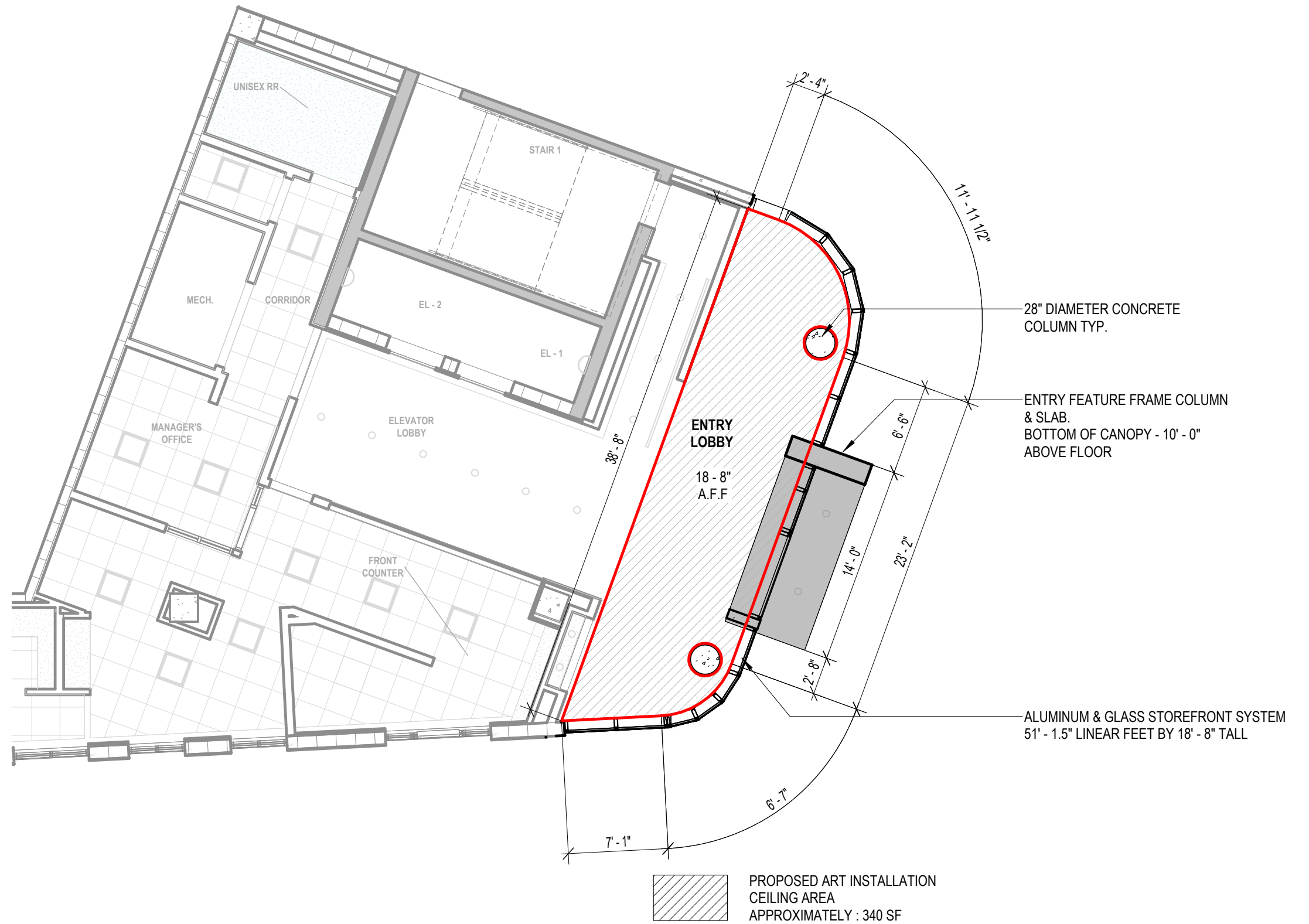
NORTH BAY VILLAGE
VILLAGE HALL & FIRE STATION 27

LOBBY FLOOR



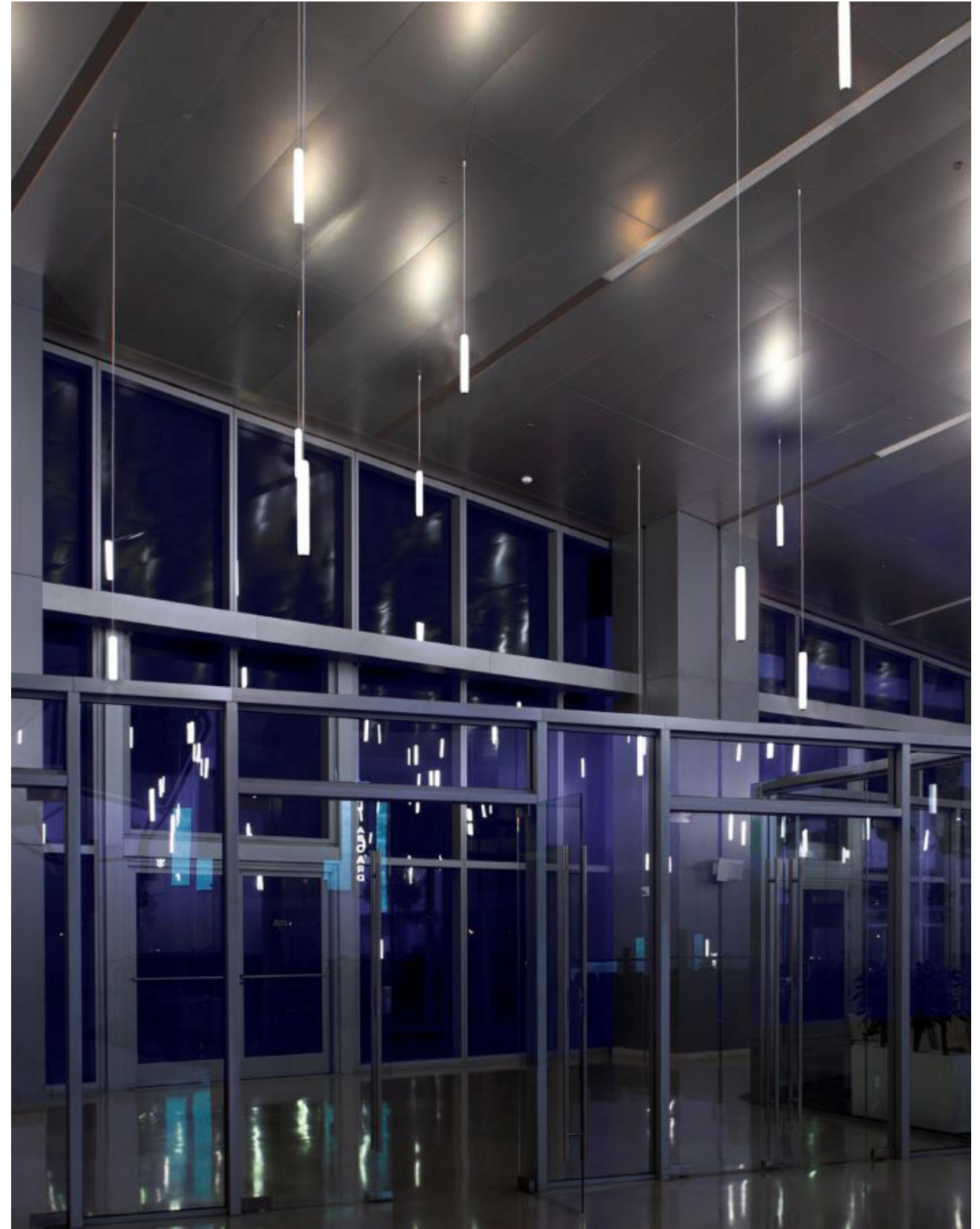
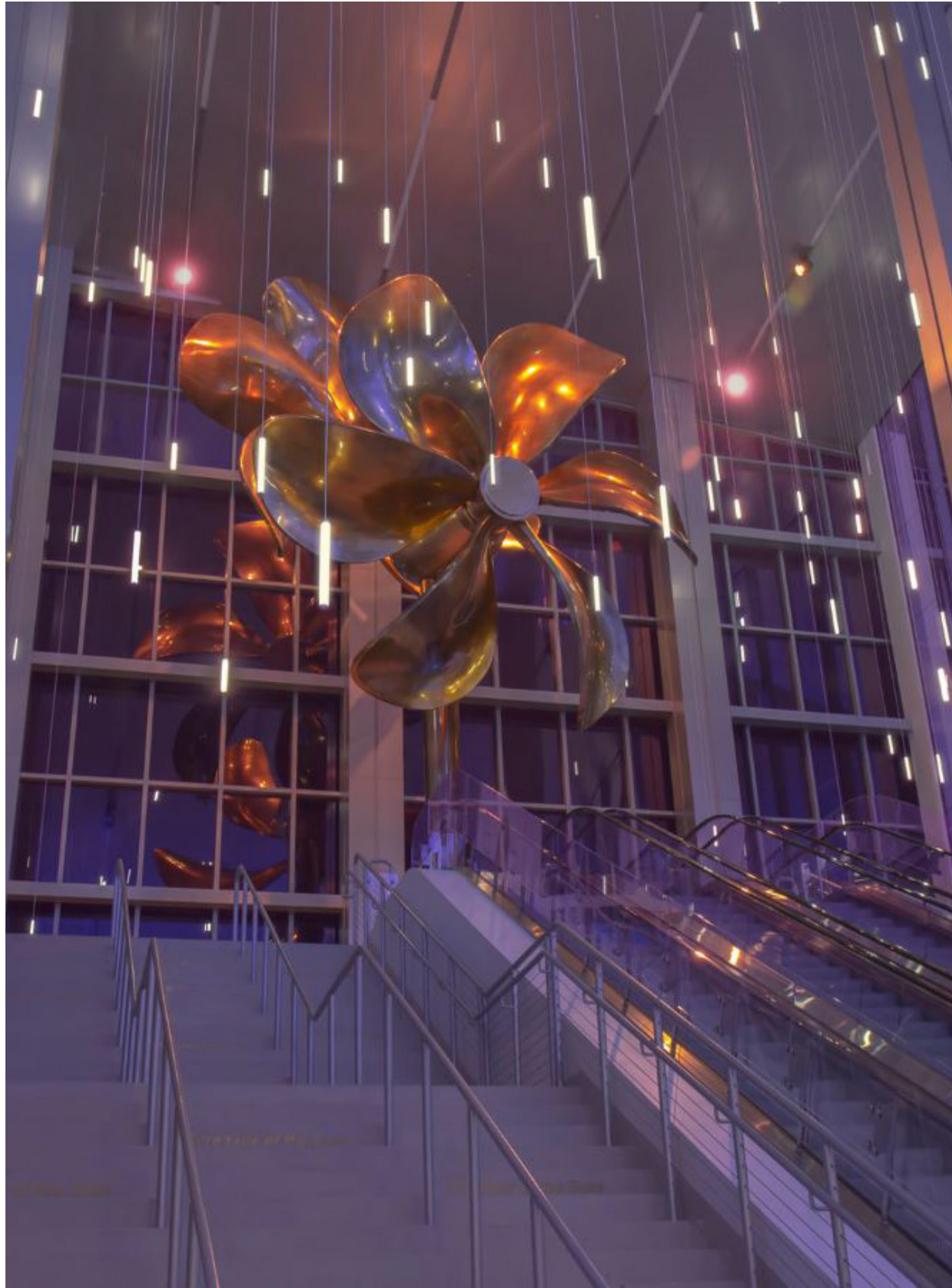
NORTH BAY VILLAGE
VILLAGE HALL & FIRE STATION 27

AIPP FLOOR INSPIRATION IMAGES



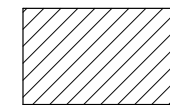
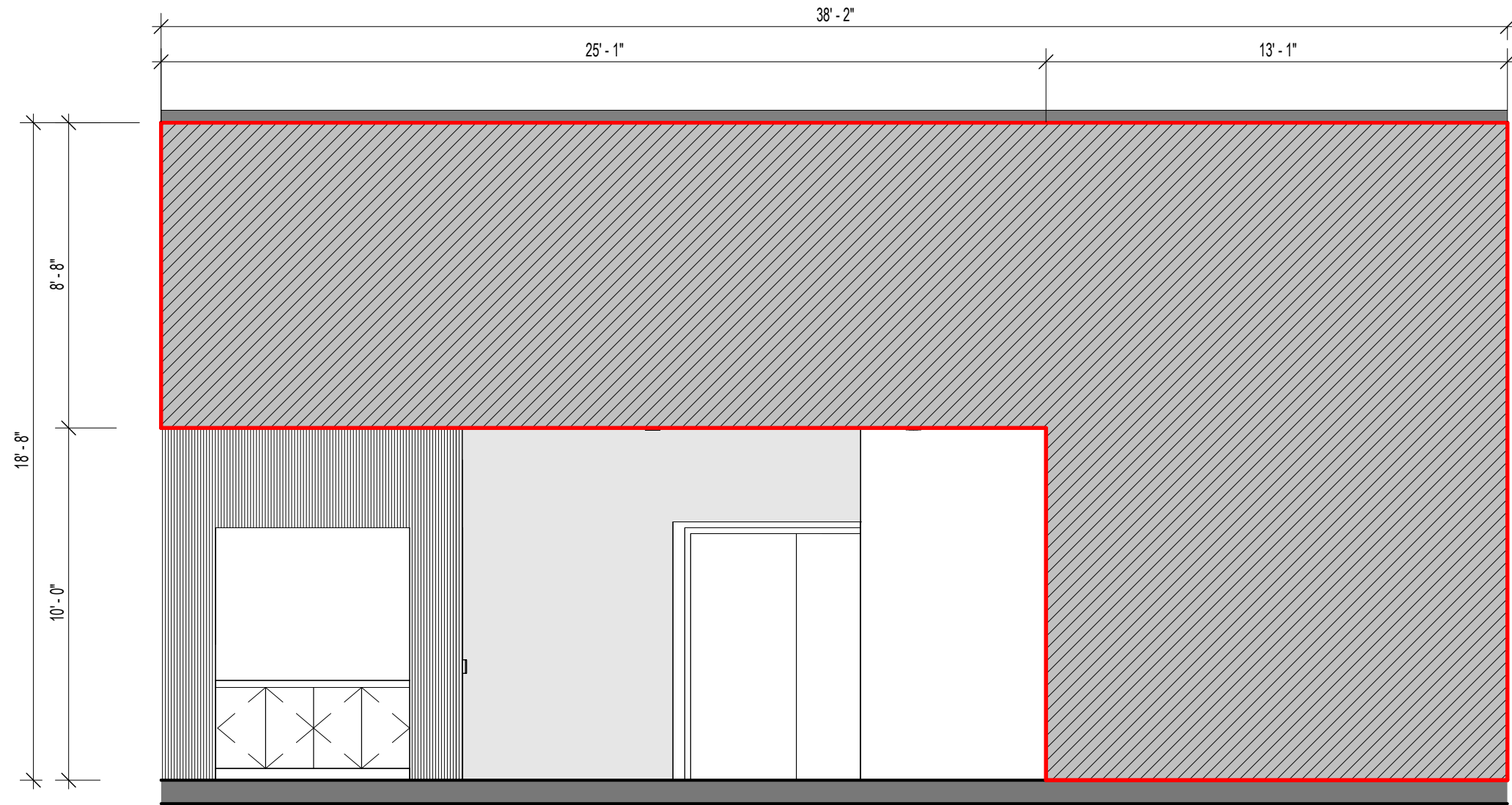
NORTH BAY VILLAGE
VILLAGE HALL & FIRE STATION 27

LOBBY CEILING



NORTH BAY VILLAGE
VILLAGE HALL & FIRE STATION 27

AIPP LIGHT FIXTURE INSPIRATION IMAGES

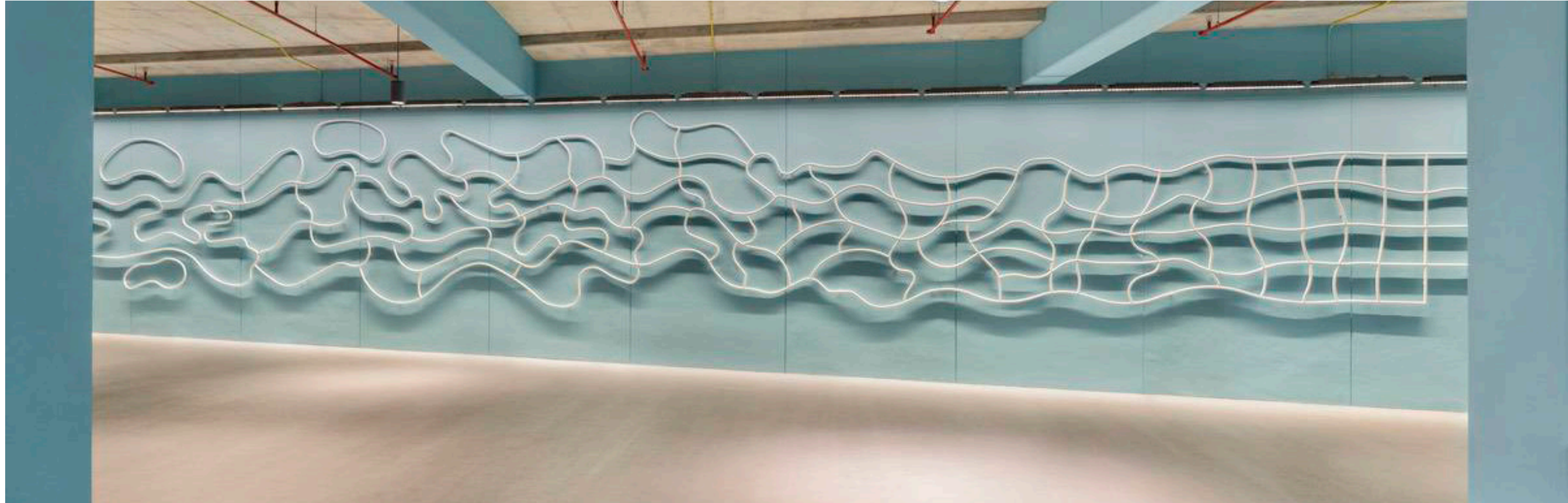


PROPOSED ART INSTALLATION
WALL AREA
APPROXIMATELY : 462 SF



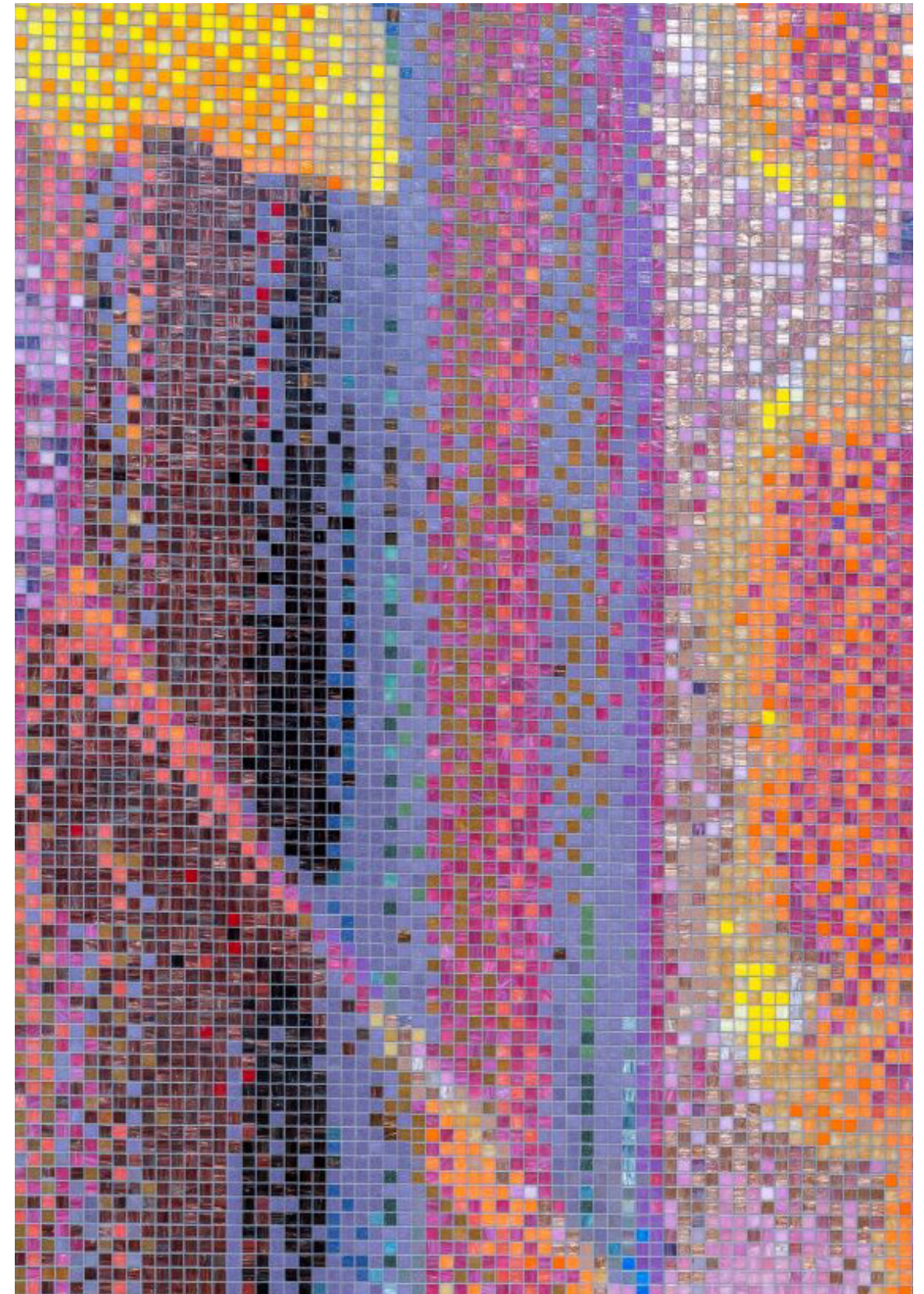
NORTH BAY VILLAGE
VILLAGE HALL & FIRE STATION 27

LOBBY WALL



NORTH BAY VILLAGE
VILLAGE HALL & FIRE STATION 27

AIPP WALL INSPIRATION IMAGES



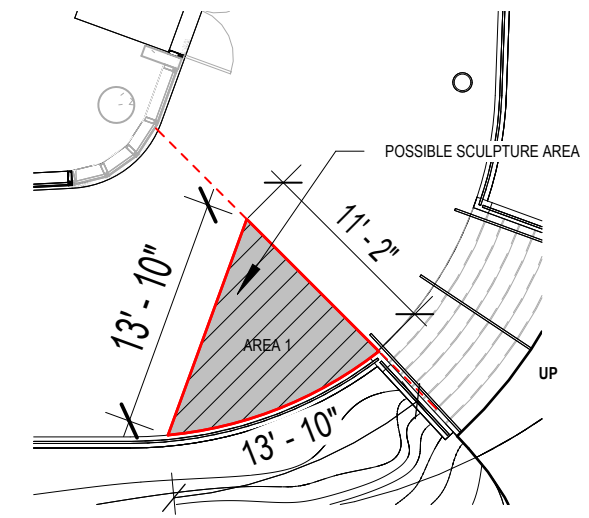
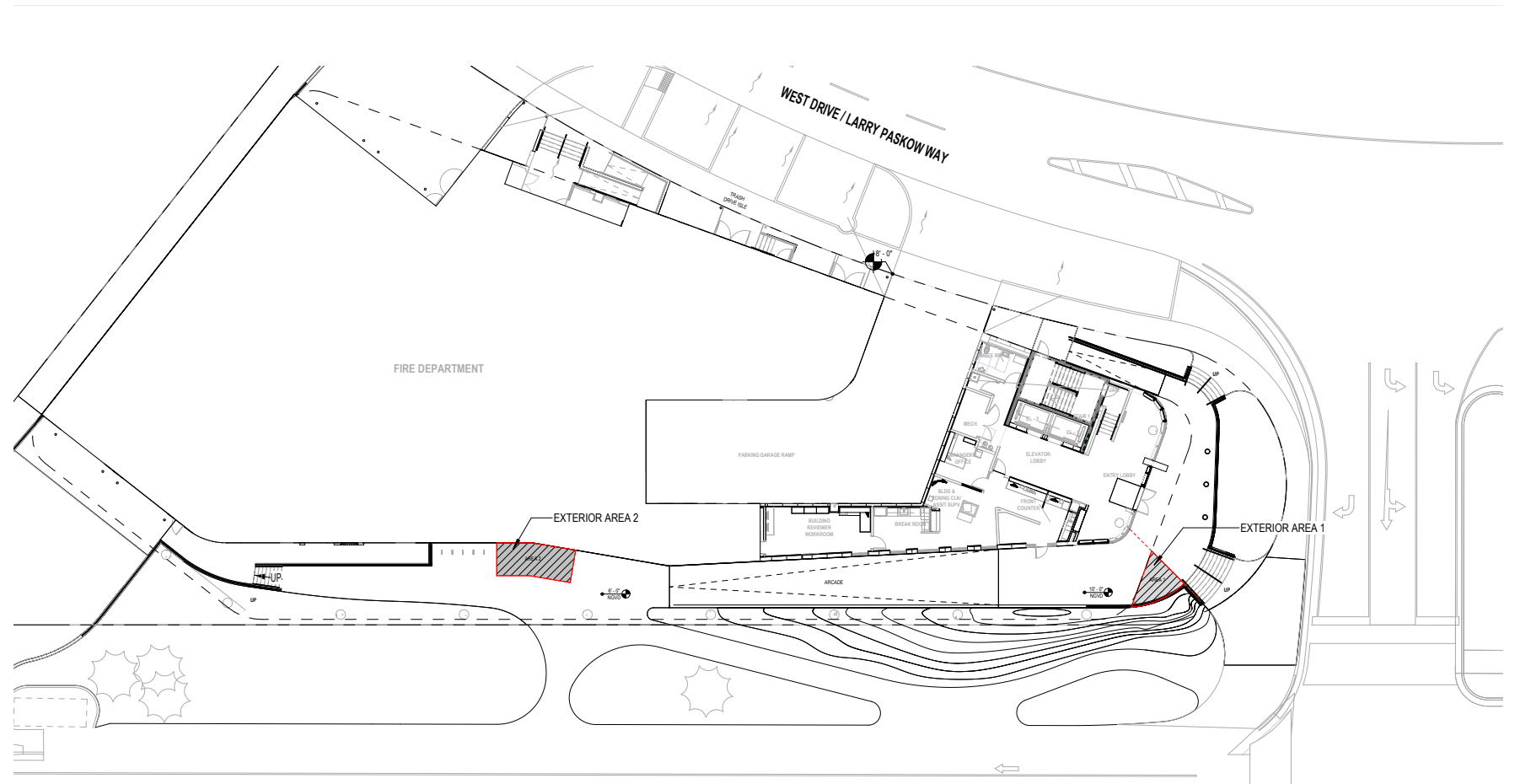
NORTH BAY VILLAGE
VILLAGE HALL & FIRE STATION 27

AIPP WALL INSPIRATION IMAGES

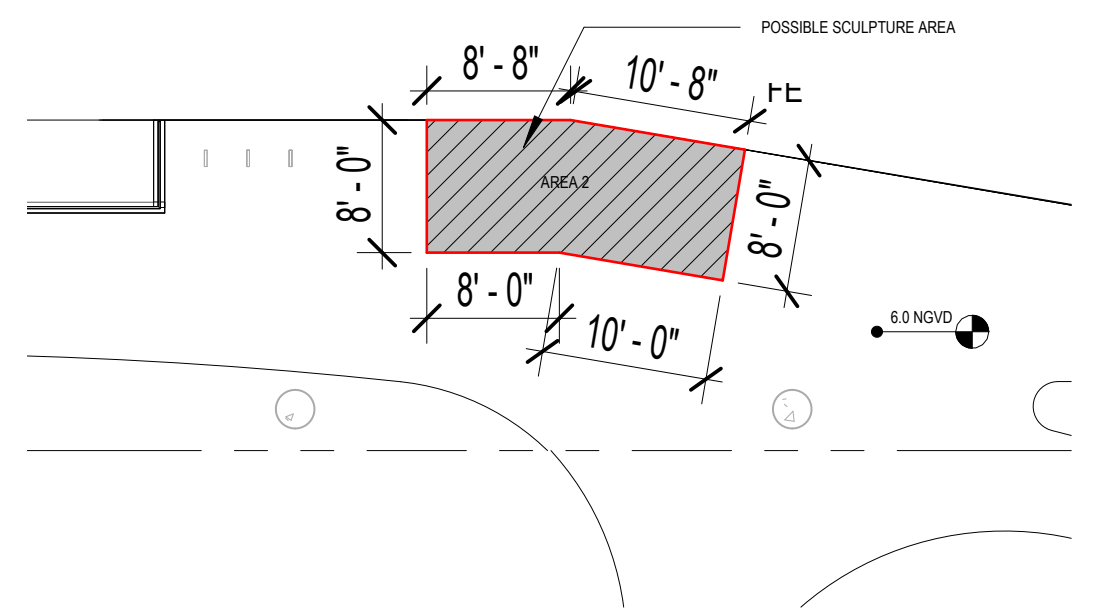
AIPP - SCULPTURE



NORTH BAY VILLAGE
VILLAGE HALL & FIRE STATION 27



EXTERIOR AREA 1 - 80 SF
AREA PROVIDED ON PLAZA SET AT 10.0' NGVD



EXTERIOR AREA 2 - 150 SF
AREA PROVIDED ON PLAZA SET AT 6.0' NGVD



NORTH BAY VILLAGE
VILLAGE HALL & FIRE STATION 27

AIPP SITE AREAS



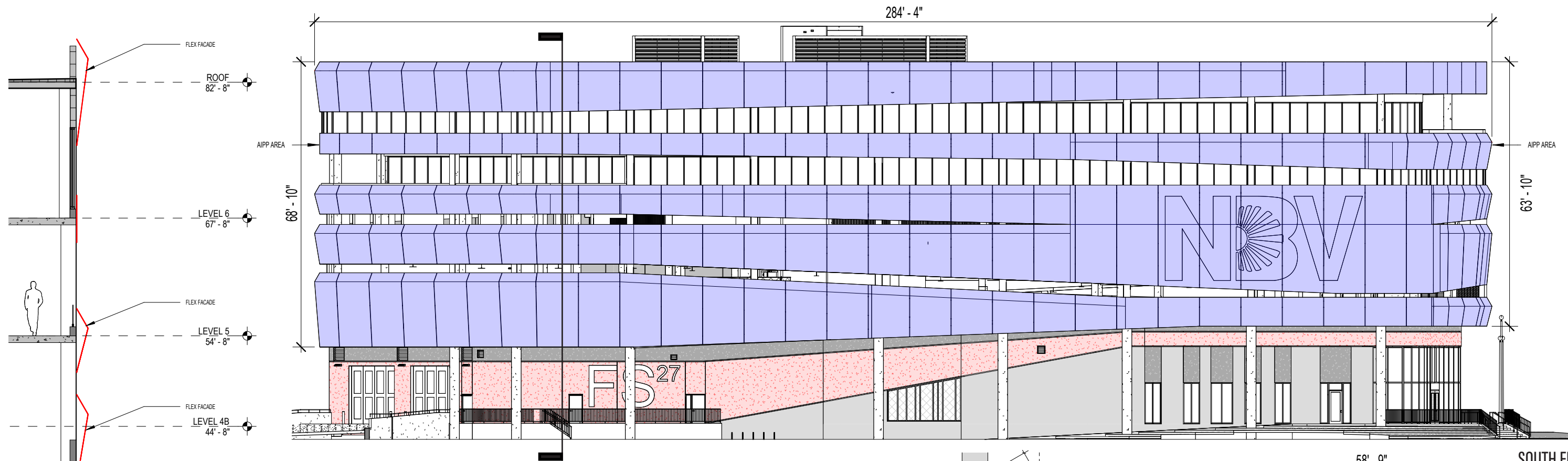
NORTH BAY VILLAGE
VILLAGE HALL & FIRE STATION 27

AIPP SCULPTURE INSPIRATION IMAGES

AIPP - BUILDING FACADE

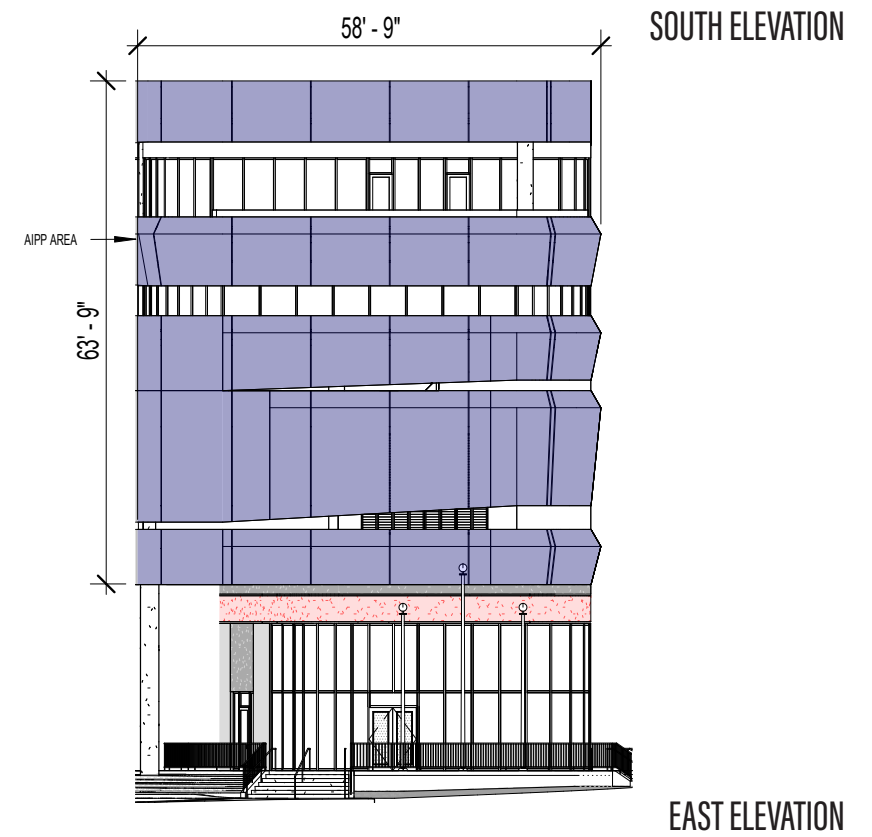
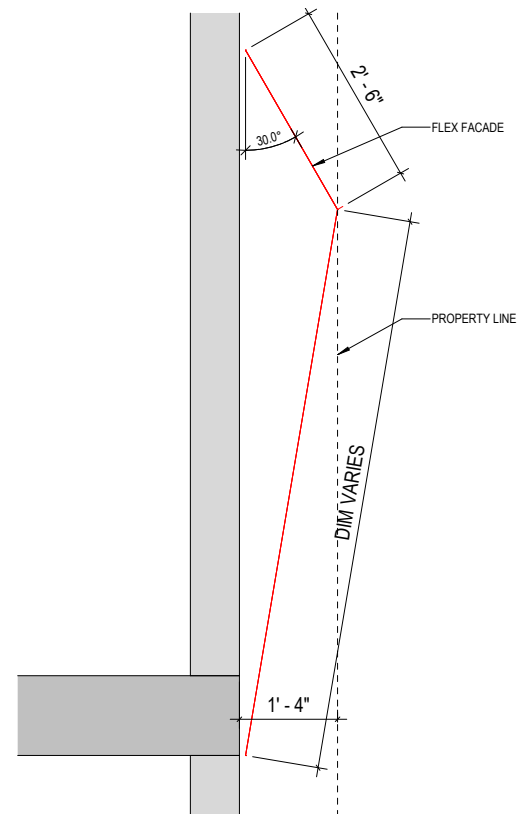


NORTH BAY VILLAGE
VILLAGE HALL & FIRE STATION 27



The facade design is defined by a series of horizontal mesh bands that shift from flat to angled panels as they wrap the building, creating a sense of movement and depth. These bands merge and separate at intervals, introducing rhythm, texture, and visual interest across the elevation. A white-to-gray gradient enhances this layered effect, emphasizing transitions and breaks while responding to light and perspective.

The mesh also offers a canvas for graphic expression. A printed design can be integrated into the system, adding a new visual layer that plays with the building's geometry, flow, and tonal variation. This artwork could echo the movement of the bands, contrast the gradient, or introduce a narrative element—enhancing the facade's dynamic quality and contributing to the site's identity.



SOUTH ELEVATION

EAST ELEVATION

AIPP AREA ELEVATION



NORTH BAY VILLAGE
VILLAGE HALL & FIRE STATION 27



NORTH BAY VILLAGE
VILLAGE HALL & FIRE STATION 27

EAST PERSPECTIVE



NORTH BAY VILLAGE
VILLAGE HALL & FIRE STATION 27

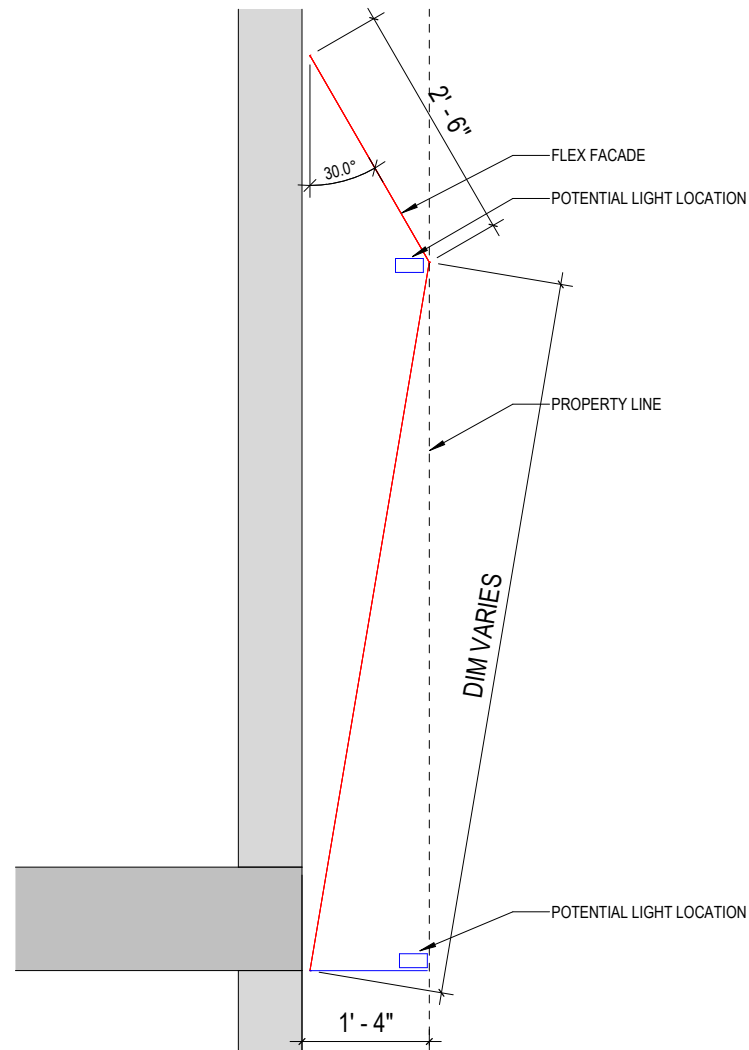
WEST PERSPECTIVE



NORTH BAY VILLAGE
VILLAGE HALL & FIRE STATION 27

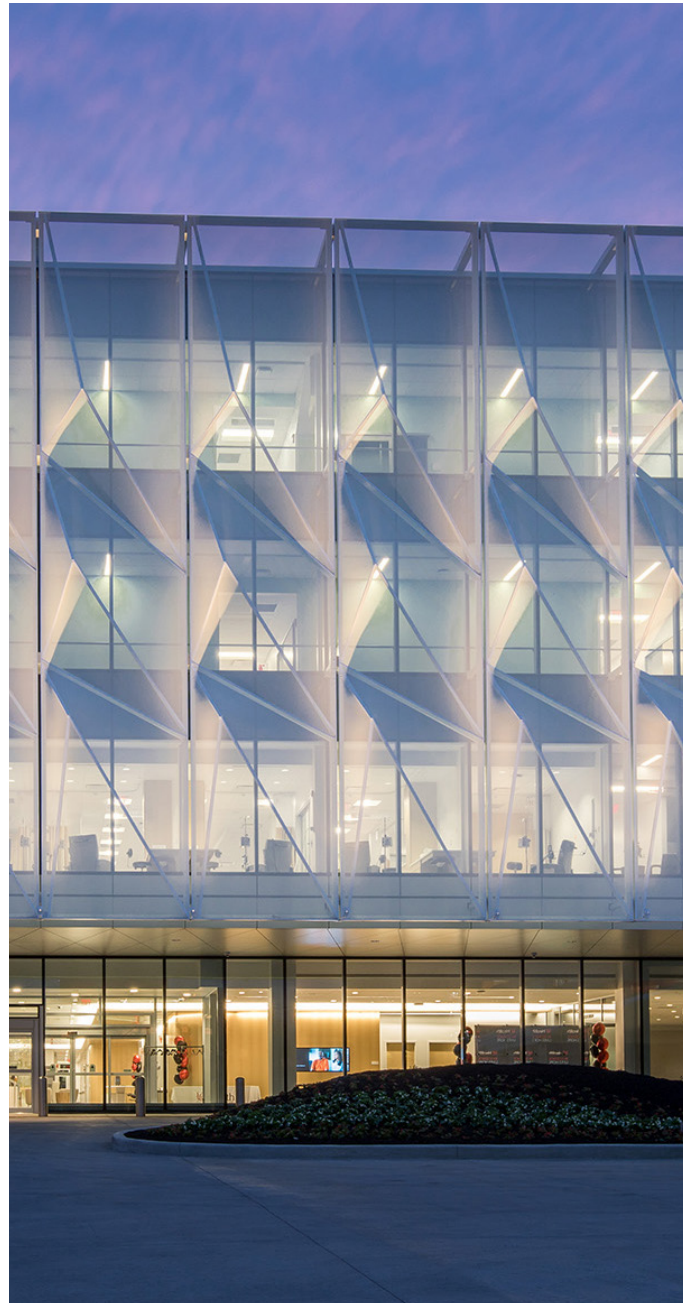
AIPP BUILDING FACADE INSPIRATION IMAGES

The building's facade features horizontal mesh bands that wrap around the structure in a gradient shifting from white to gray. This treatment introduces a sense of movement and texture across the surface. One idea that can be explored is the use of integrated lighting to enhance the gradient effect—potentially accentuating the tonal transitions and adding depth to the material, especially at night. The bands, which shift from angled panels to flat surfaces, introduce dimensional relief that changes the way light interacts with the facade. This variation allows for a range of lighting strategies: fixtures could be positioned behind the mesh at the angled portions to create a subtle glow that accentuates the projection and shadow of the form, or placed below to graze the underside of the bands and emphasize their curvature and rhythm. With thoughtful placement, the lighting can enhance the reading of movement across the facade, shifting its perception throughout the day and creating a distinct identity after dark—without compromising the architectural integrity of the design.



NORTH BAY VILLAGE
VILLAGE HALL & FIRE STATION 27

AIPP BUILDING ILLUMINATION



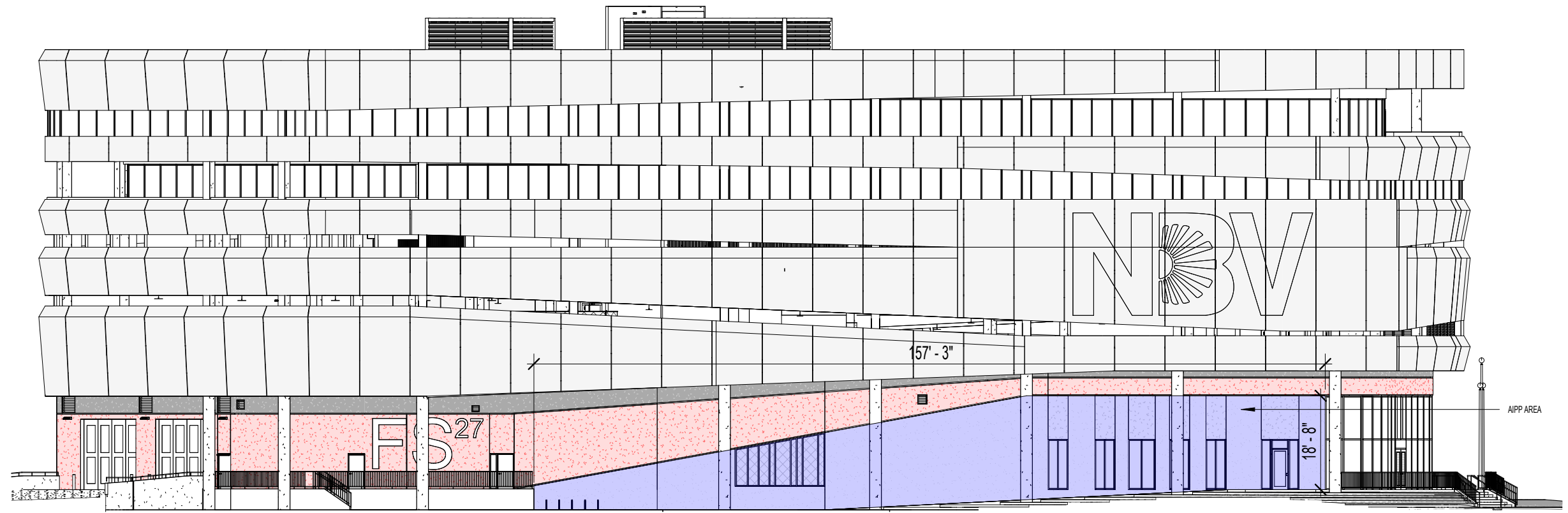
NORTH BAY VILLAGE
VILLAGE HALL & FIRE STATION 27

AIPP BUILDING ILLUMINATION INSPIRATION IMAGES

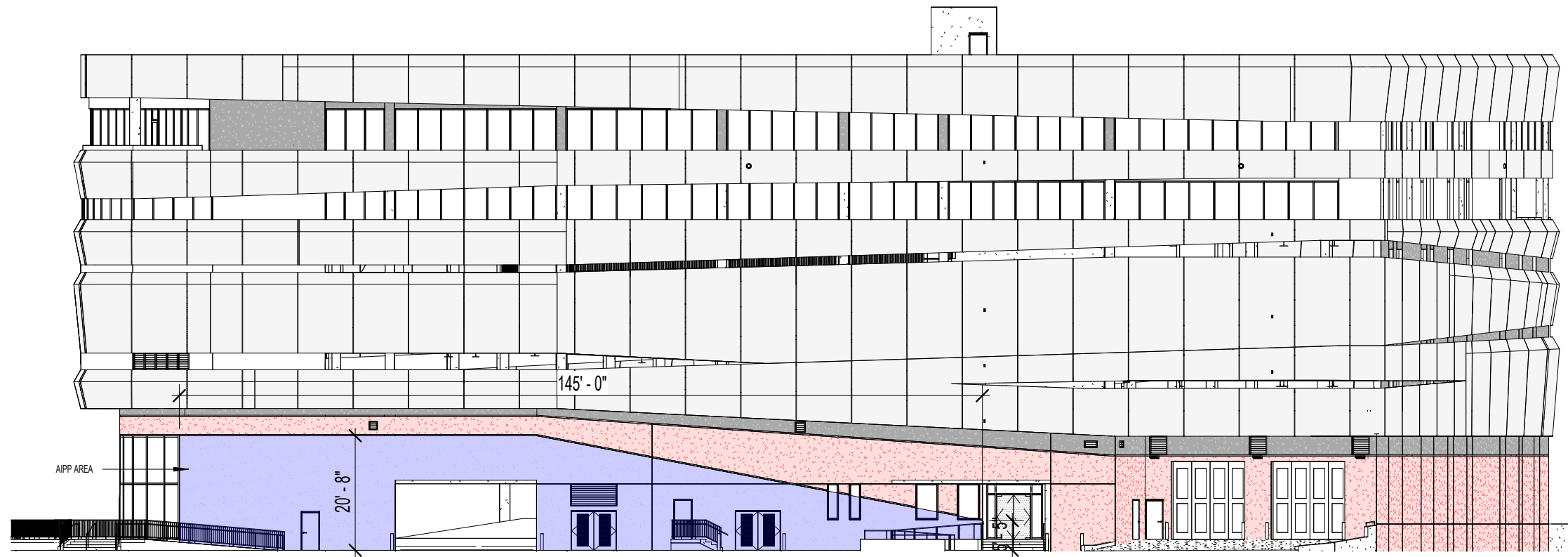
AIPP - EXTERIOR WALLS



NORTH BAY VILLAGE
VILLAGE HALL & FIRE STATION 27



SOUTH ELEVATION

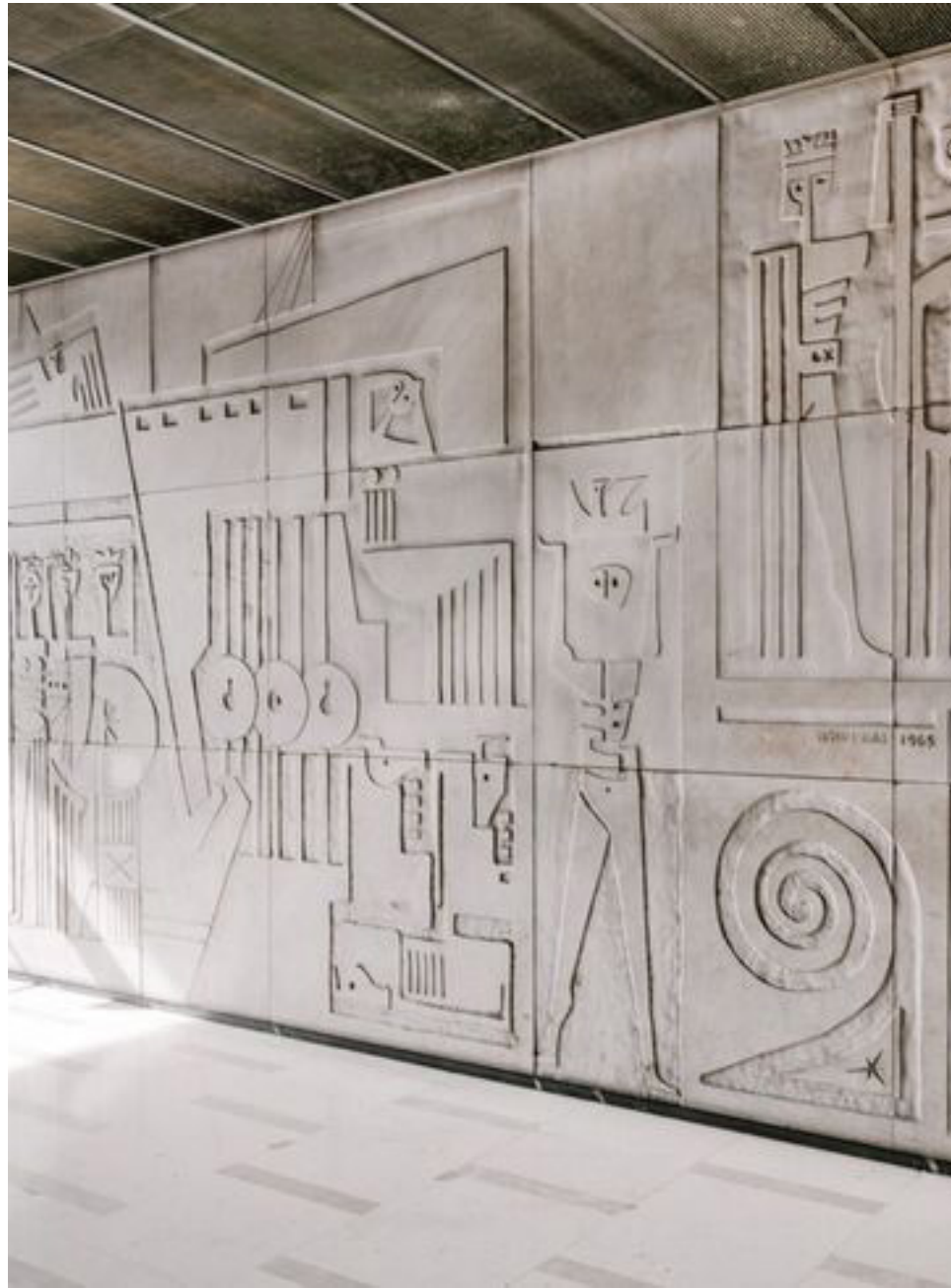


NORTH ELEVATION



NORTH BAY VILLAGE
VILLAGE HALL & FIRE STATION 27

AIPP AREA ELEVATION



NORTH BAY VILLAGE
VILLAGE HALL & FIRE STATION 27

AIPP EXTERIOR MURAL INSPIRATION IMAGES

