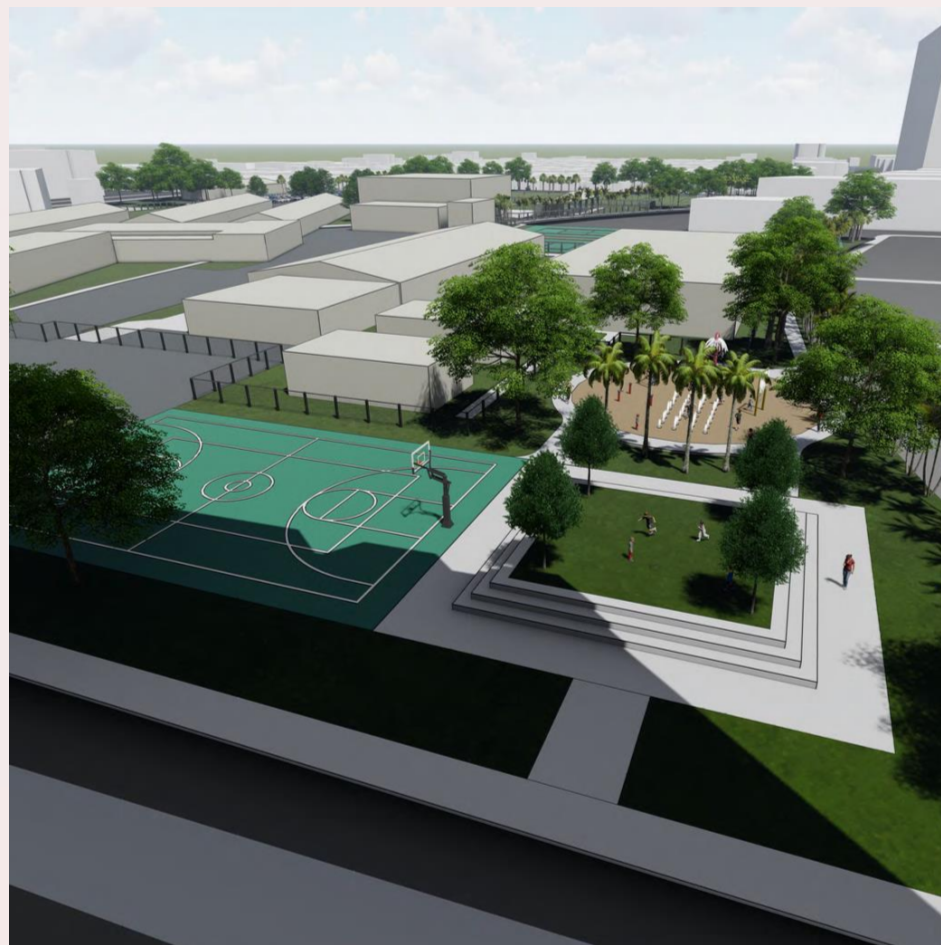


TIES COMMUNITY PARK WORKSHOP

Monday, September 14, 2020



Splash Pad



Sports Courts



Multipurpose
Field

WHERE IT ALL BEGAN

FALL 2019

Mayor Latham leads the discussion to convert the perimeter land of Treasure Island Elementary School (TIES) into a community park. The Mayor, Village Administration, and representatives of Miami-Dade County Public Schools (MDCPS) meet in November 2019 to walk the school grounds and discuss how the Village might be able to design and construct a community park.



Treasure Island
Elementary School

TIES COMMUNITY PARK TIMELINE



8

MONTHS

After negotiating for nearly eight months with the MDCPS, the Village administration secured a Joint Use Agreement (JUA) for a future community park at TIES.



**MAY
2020**

The NBV Commission approved resolution 2020-045 approving the JUA with MDCPS.



**JULY
2020**

MDCPS also approved the JUA with NBV allowing the Village to move forward with the development of a community park.

Park OVERVIEW

- Length of agreement with MDCPS is for up to 35 years
- Village use during:
 - School days from 6 pm to 9 pm
 - Non-school days from 8 am to 9 pm



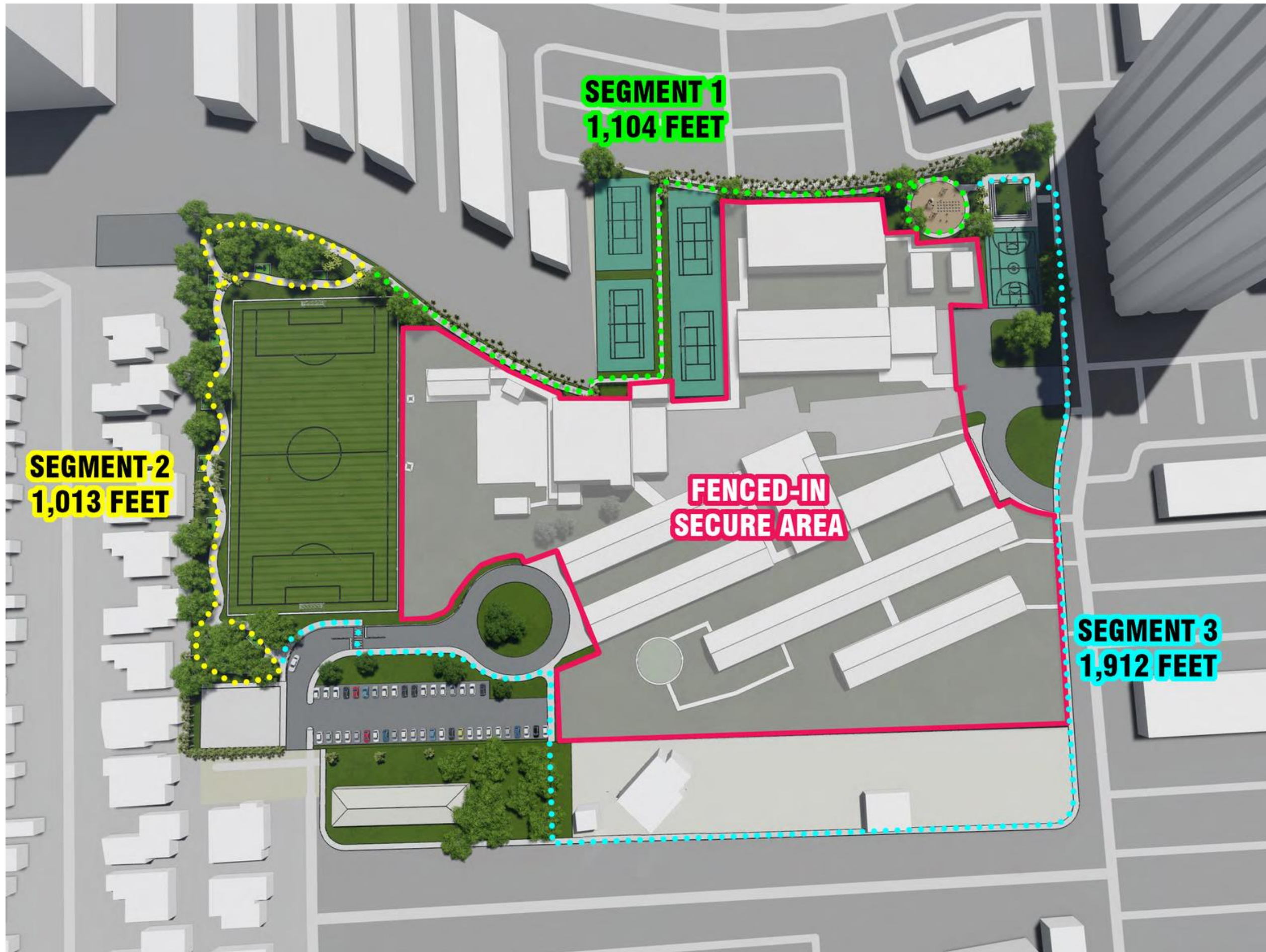
PROJECT OVERVIEW

- The park will consist of an urban trail approximately $\frac{3}{4}$ of a mile.

- Segment 1:
 - An urban trail segment of 0.2 mile.
 - Refurbished multipurpose courts.
 - Splash pad
- Segment 2:
 - An urban trail segment of 0.2 mile
 - Exercise equipment throughout the trail
- Segment 3:
 - An urban trail segment of 0.4 mile
 - Open space area

- Turf soccer field

- Upgraded fencing throughout the TIES property



PROJECT Concept Renderings



BENEFITS OF A TURF FIELD

COST SAVINGS based on a 10 year investment



\$30.91

per hour of use.
\$299,990 in maintenance

INCREASED USAGE



2,052

additional hours per year

WATER SAVINGS



1,000,000 - 3,000,000

gallons of fresh water per year

TIRES SAVED



20,000

tires saved per field

PESTICIDES NOT USED



8,000 lbs

of pesticides eliminated per year

INJURIES REDUCED



Published data suggests that
FieldTurf is a safer option than
natural grass. [Learn more](#)

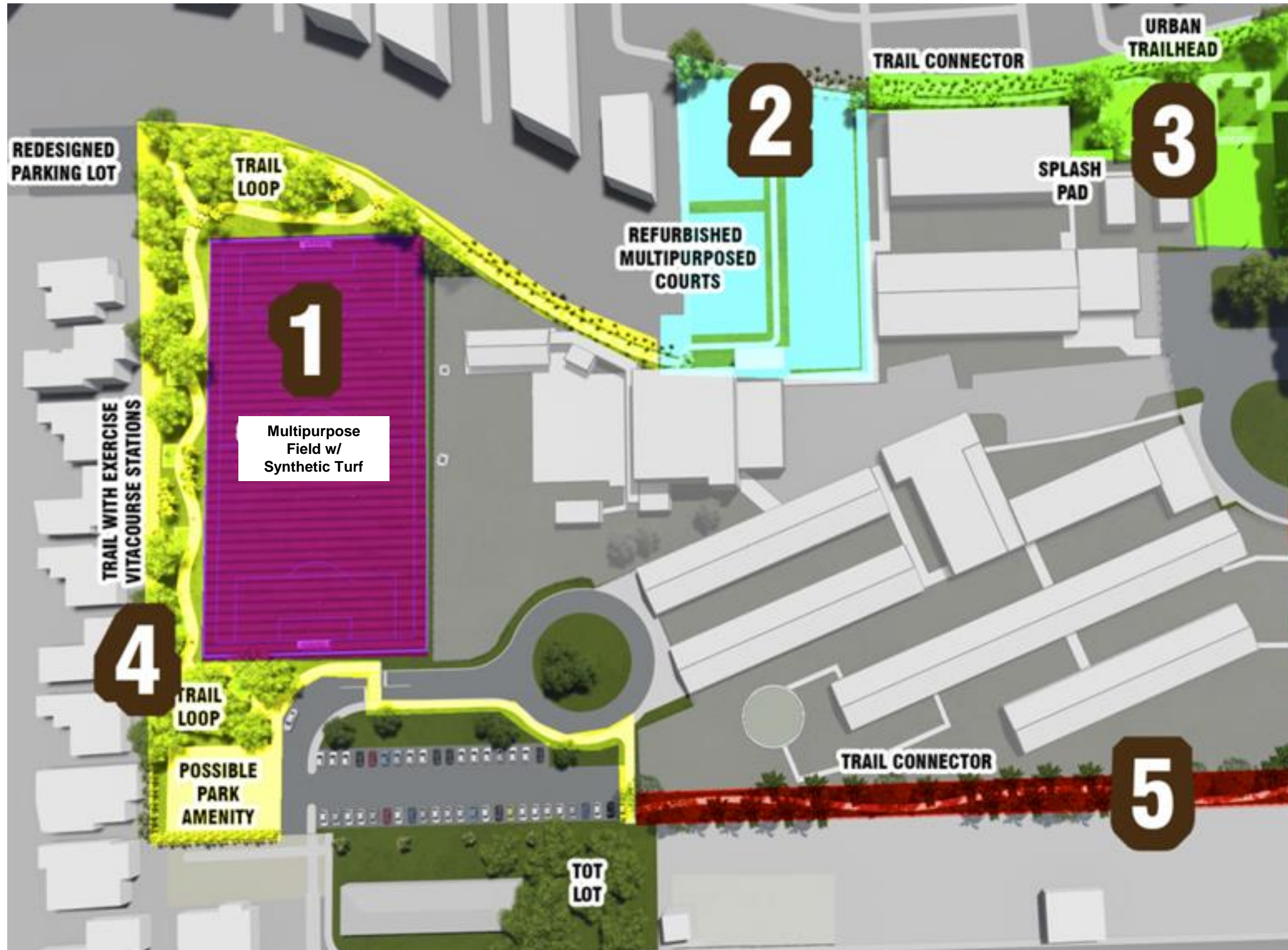
Initial Cost Break-Down

Estimate

Project Name	Construction	General Conditions	Contingency	Design Fees	MDCPS Required Mgmt. Cost (8% of total construction)	Total Project Allocation
Splash pad, urban trailhead and trail connector	\$ 434,981.00	\$ 108,698.00	\$ 121,357.	\$ 63,105.00	\$ 58,251.00	\$ 786,393.00
Turf Field (includes drainage and perimeter fencing)	\$ 1,381,664.00	\$ 345,266.00	\$ 385,475.00	\$ 218,621.00	\$ 186,482.00	\$ 2,517,510.00
Refurbished Courts, pathway and ADA access ramp	\$ 125,272.00	\$ 31,304.00	\$ 34,950.00		\$ 15,322.00	\$ 206,848.00
Exercise trail with vita-course stations	\$ 513,115.00	\$ 128,223.00	\$ 143,155.00	\$ 97,216.00	\$ 70,536.00	\$ 952,247.00
Trail connector and any needed sidewalk improvements along East Treasure Drive	\$ 156,988.00	\$ 39,230.00	\$ 43,798.00		\$ 19,201.00	\$ 259,217.00
					Grand Total	\$ 4,722,218.00

INITIAL PROJECT FUNDING

- Project estimated at \$4.7 Million
- \$3.04 million funded by increase of Village debt and issuance of the previously voter-approved bonds
- This represents approx. \$35 per \$100,000 of a home's taxable value, for the next 13 to 15 years
- \$3.04 million is enough for the:
 - Design
 - Permitting
 - Inspection services
 - MDCPS project management fees
 - Construction of all phases except the turf soccer field
- Need additional \$1.7 million in funding



INITIAL PROJECT SCHEDULING

Estimated Project Length: 26 months

- Data Collection – 2 months
- Conceptual Design Phase – 3 months
 - Schematic Design Phase – 4 months
- Design Development Phase – 6 months
- Bid Construction Documents Phase – 3 months
 - Solicitation Phase – 4 months
- Construction Phase – 8 months

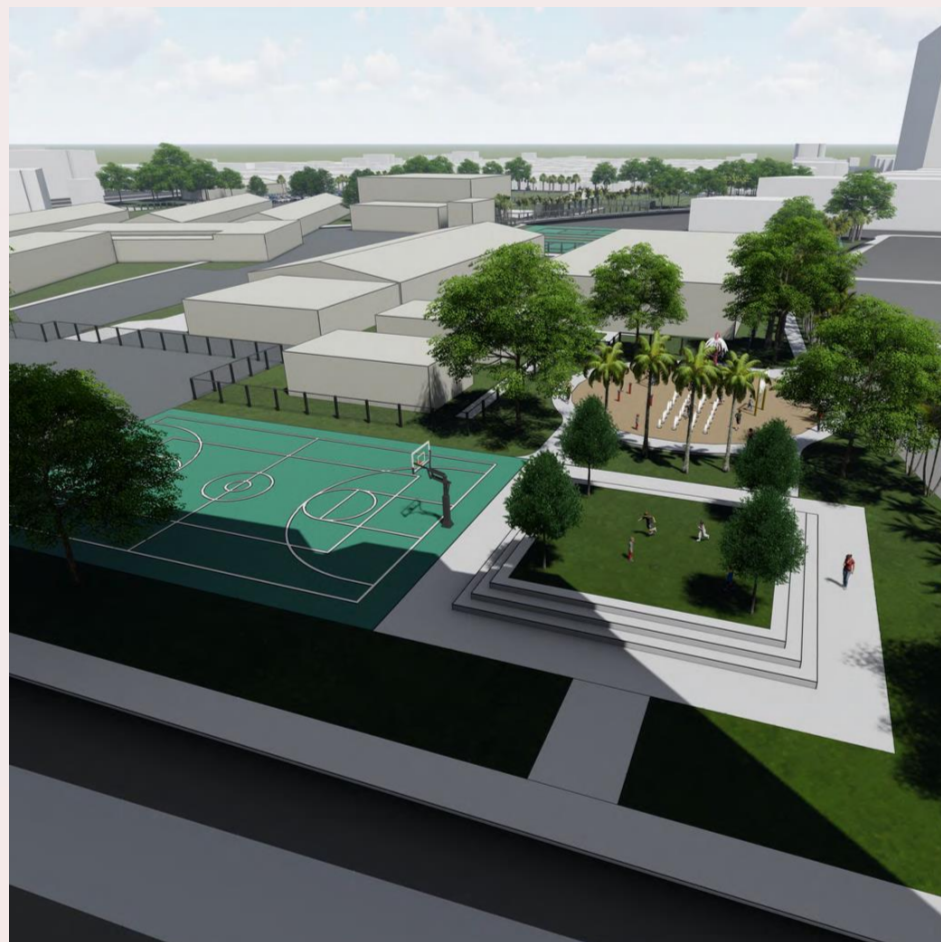
* Phases may overlap

School Administration can halt construction should noise be considered a disruption. Construction also can not occur during testing days.

QUESTIONS AND COMMENTS



Splash Pad



Sports Courts



Multipurpose
Field