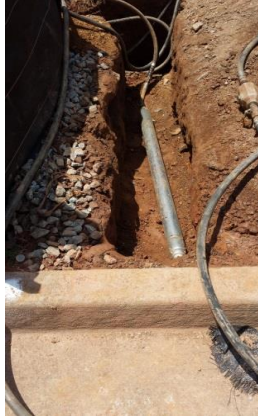


Information about Missile (aka Stitch) Boring to Directly Place Fiber Cable

- **Equipment** – This process utilizes pneumatic piercing tools to bore between small pits. The rigid object that the worker is placing in the ground is called a "missile". A large air compressor on a trailer powers the missile.
- **Benefits of this method** - It is a preferred method because of the minimal surface disruption and restoration required.
- **Pit information** - The bore pits are hand dug and approx. 12" wide by 36" long and depending on local gov. guidelines 30" to 40" deep. The pits are spaced approx. 20' to 30' apart depending on ground conditions and existing obstacles. Piles of dirt are laid on blue tarps in order to restore the dirt to the pit it came from the same day. The sod is cut and carefully laid back if possible to restore the same grass which then just needs to be watered regularly to continue to grow and root again. It makes it almost impossible to see where it was. If the sod is not reusable, we will purchase new sod to replace the old.
- **Process** - The missile is laid into the open pit. When air pressure is applied, it allows the missile to "hammer" its way to the next pit.



- **Disclaimer** - Despite our best efforts to avoid damaging underground facilities, sometimes accidents happen. For example, we may damage some sprinklers or nick some other similar customer - owned underground piping, but we will make sure that any damaged items are put back in working order at our expense. Furthermore, despite calling for underground facility locates and taking extreme care to avoid such, we may inadvertently damage some underground utilities—which may require the customer to call into their provider if we're not aware of the break.