



North Bay Village, FL

## ENTRANCE FEATURE

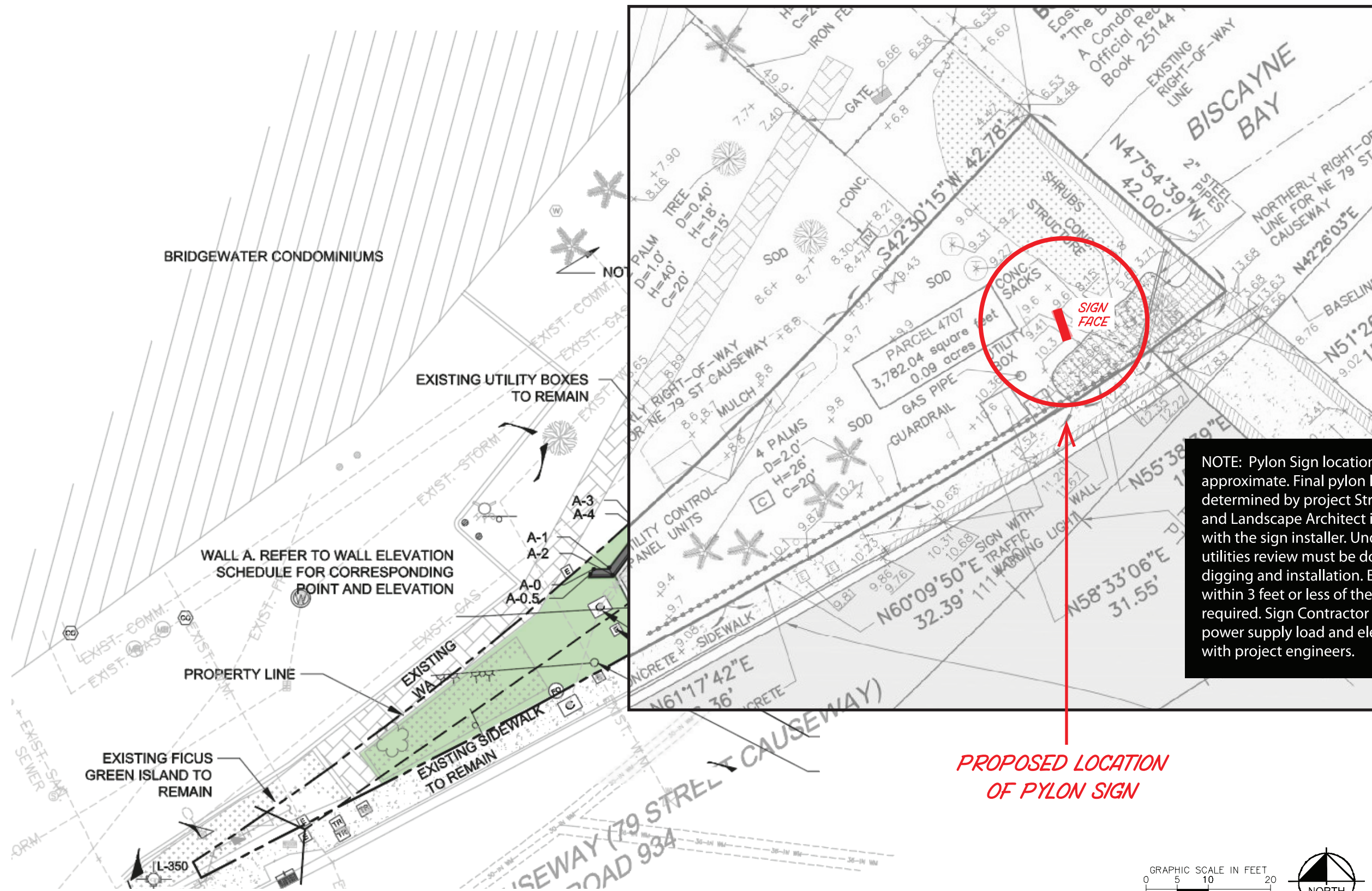
ENVIRONMENTAL GRAPHIC DESIGN

*April 10, 2023*

Feb. 26, 2024

## CONTENTS

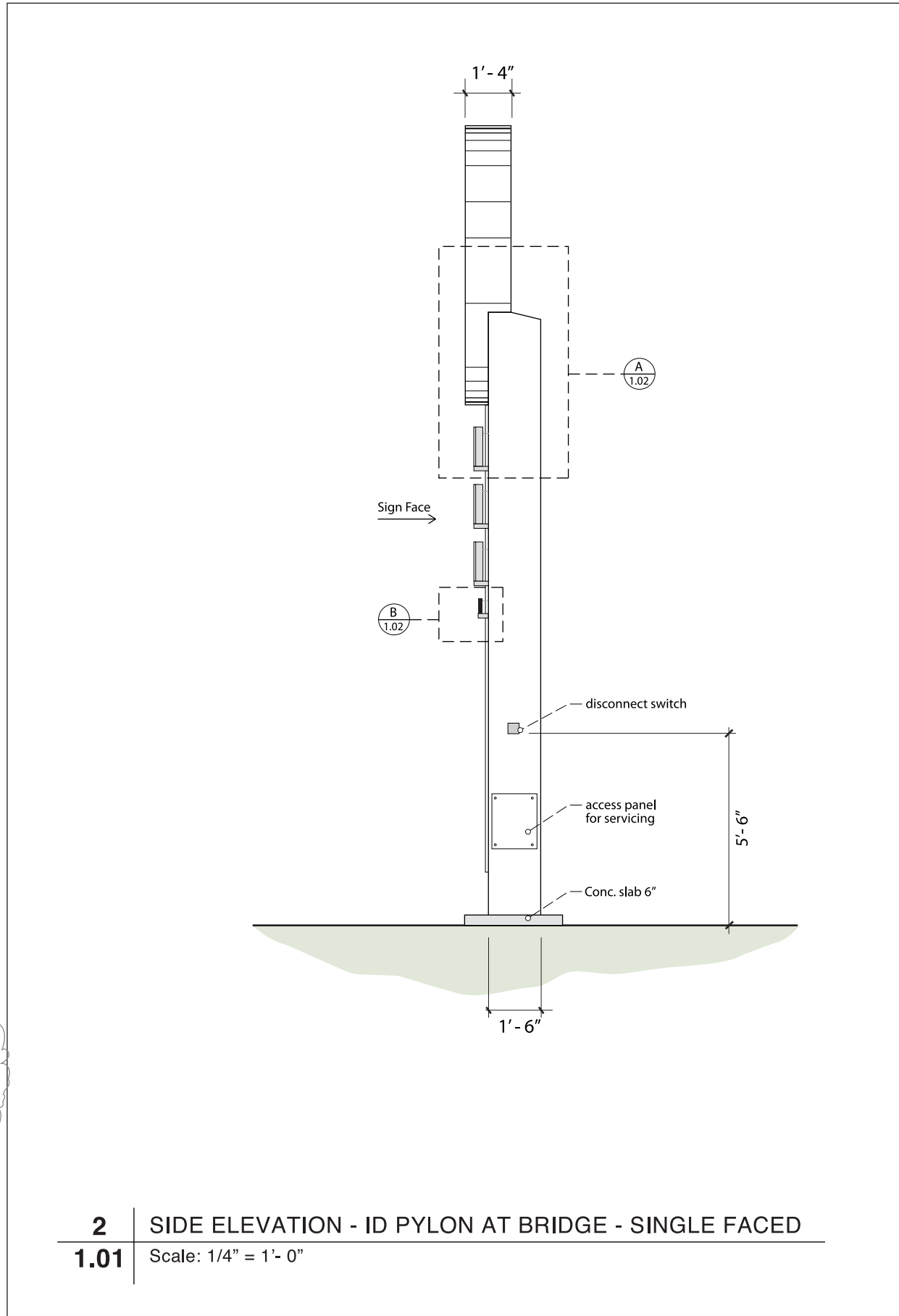
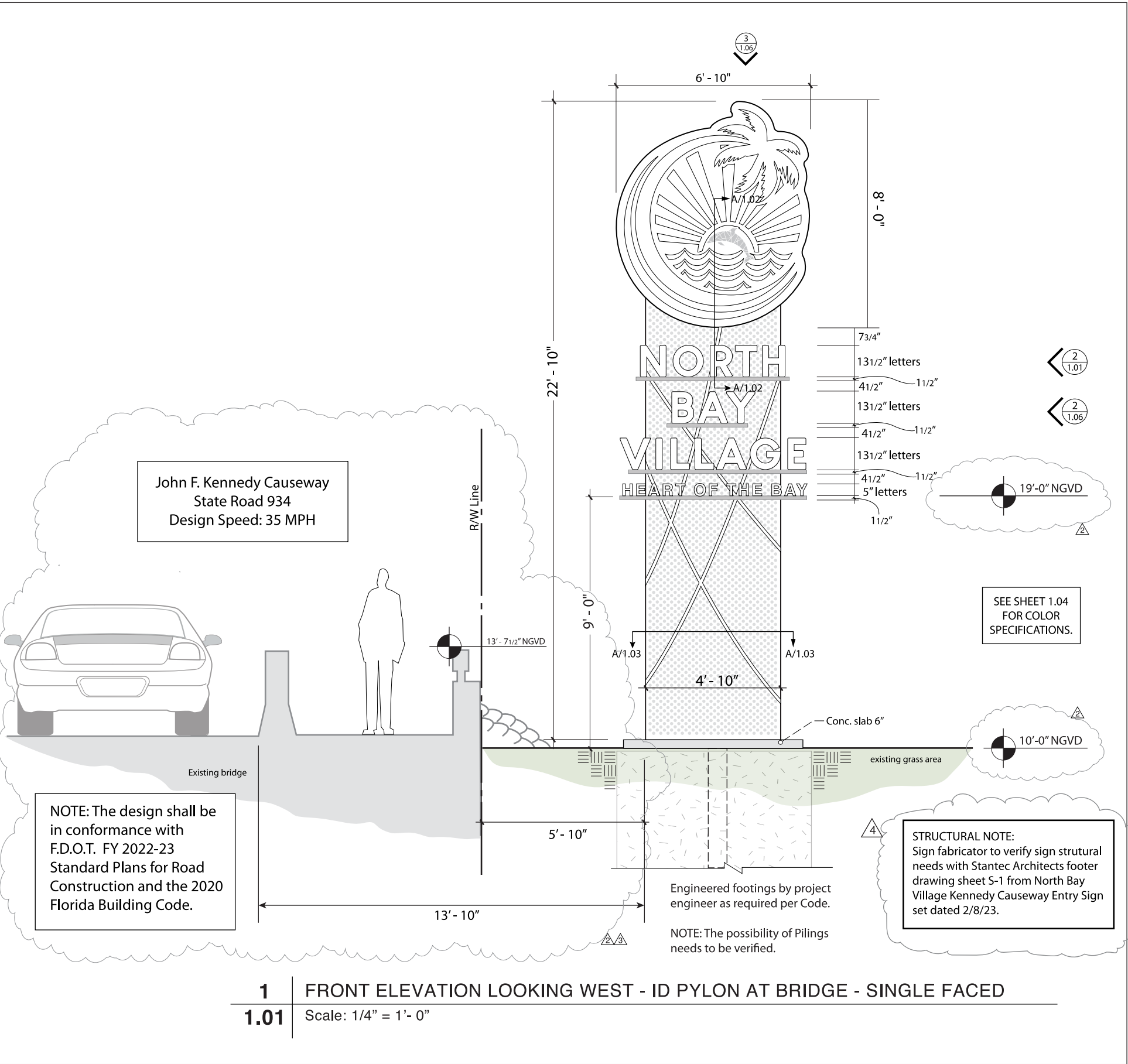
<i>sheet</i>	<i>description</i>
<b>1.00.....</b>	<b>SITE LOCATION</b>
<b>1.01.....</b>	<b>ELEVATIONS</b>
<b>1.02.....</b>	<b>DETAIL SECTIONS</b>
<b>1.03.....</b>	<b>DETAIL SECTIONS</b>
<b>1.04.....</b>	<b>COLOR SPECS/ARTWORK</b>
<b>1.05.....</b>	<b>DAY &amp; NIGHT COLOR RENDERINGS</b>
<b>1.06.....</b>	<b>REAR &amp; SIDE ELEVATIONS</b>



NOTE: Pylon Sign location shown is approximate. Final pylon location must be determined by project Structural Engineer and Landscape Architect in coordination with the sign installer. Underground utilities review must be done prior to digging and installation. Electric supply within 3 feet or less of the pylon will be required. Sign Contractor must coordinate power supply load and electrical hook-ups with project engineers.

**PROPOSED LOCATION OF PYLON SIGN**





**A - UPPER SIGN CABINET;** of aluminum construction with acrylic face. Face of light cabinet shows City logo graphic of translucent DIGITALLY PRINTED VINYL to allow for light illumination through face, 1" alum. retaining trim required. Sides and back to be painted to match sign face Mathews MAP Silver/Aluminum color.  
Weep holes required with light baffles. Sign cabinet contains internal framing as required (Item D).

**B - PYLON STRUCTURE;** with 3/4" diameter perforated aluminum face panel, internal illumination with RGB LED's, placed vertically onto the interior sides of the structure to allow for light dispersion throughout pylon structure. Light baffles required to block direct LED light wherever it occurs.

**C - SIGN LETTER;** 3" Deep shoulder cut letter, acrylic face, internal illumination. Sign letters contain RGB color LED's for color flexibility, with face illumination of letters. See Detail B/1.03.

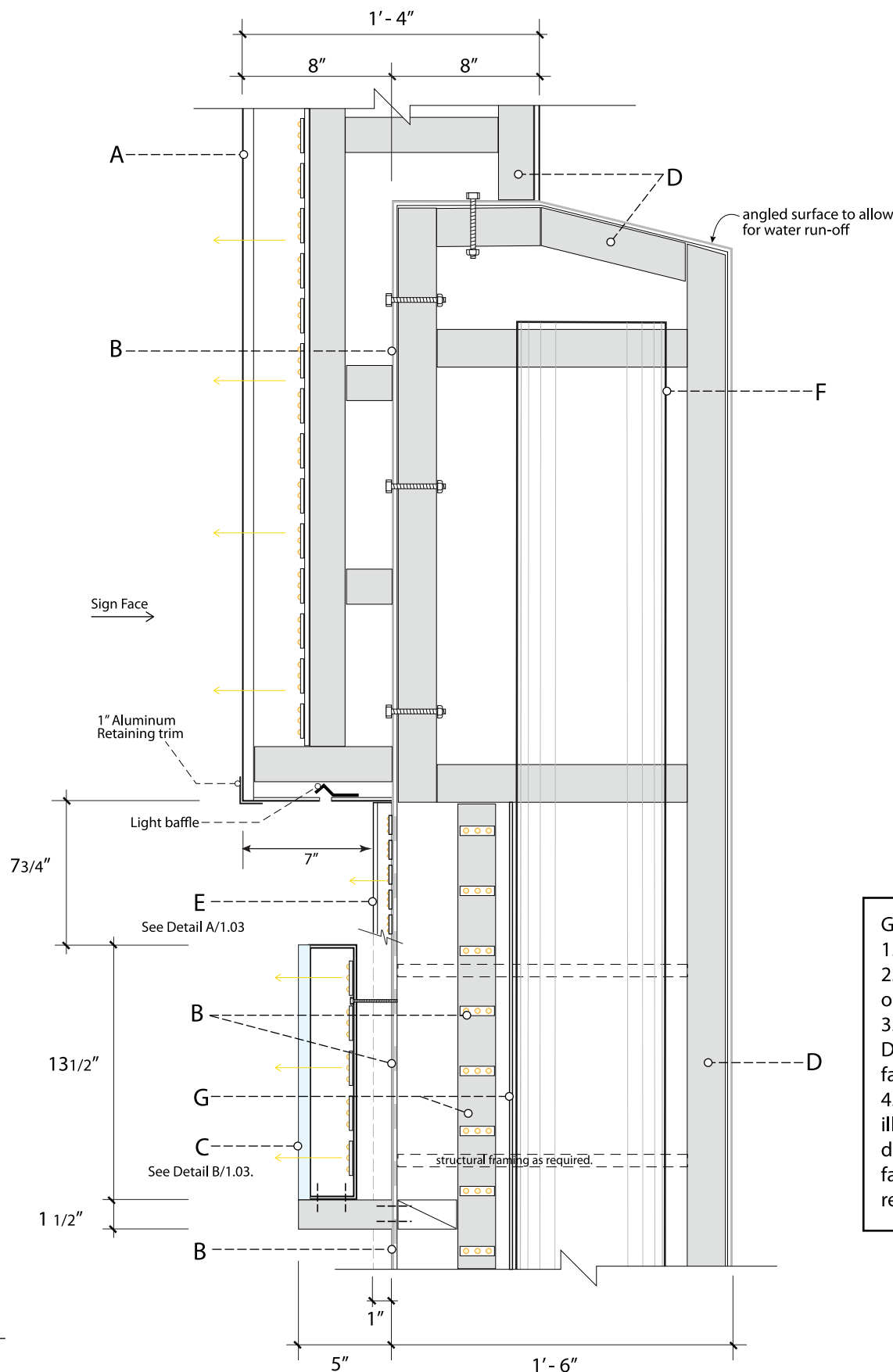
**D - INTERNAL FRAMING;** as determined by project structural engineer. All internal structural framing and surfaces to be painted bright white.

**E - ALUMINUM EXTRUSION;** "U" channels attached to sign face (qty. 4), 1" wide with white LED's set into base. "U" channels are bent to match curved pattern. Face contains colored acrylic cover to allow for diffused light emission through face. LED's are to be placed so as to avoid hot spots and to achieve an even dispersion of white light.

**All edges and end points must be softened to avoid sharpness when touched.**

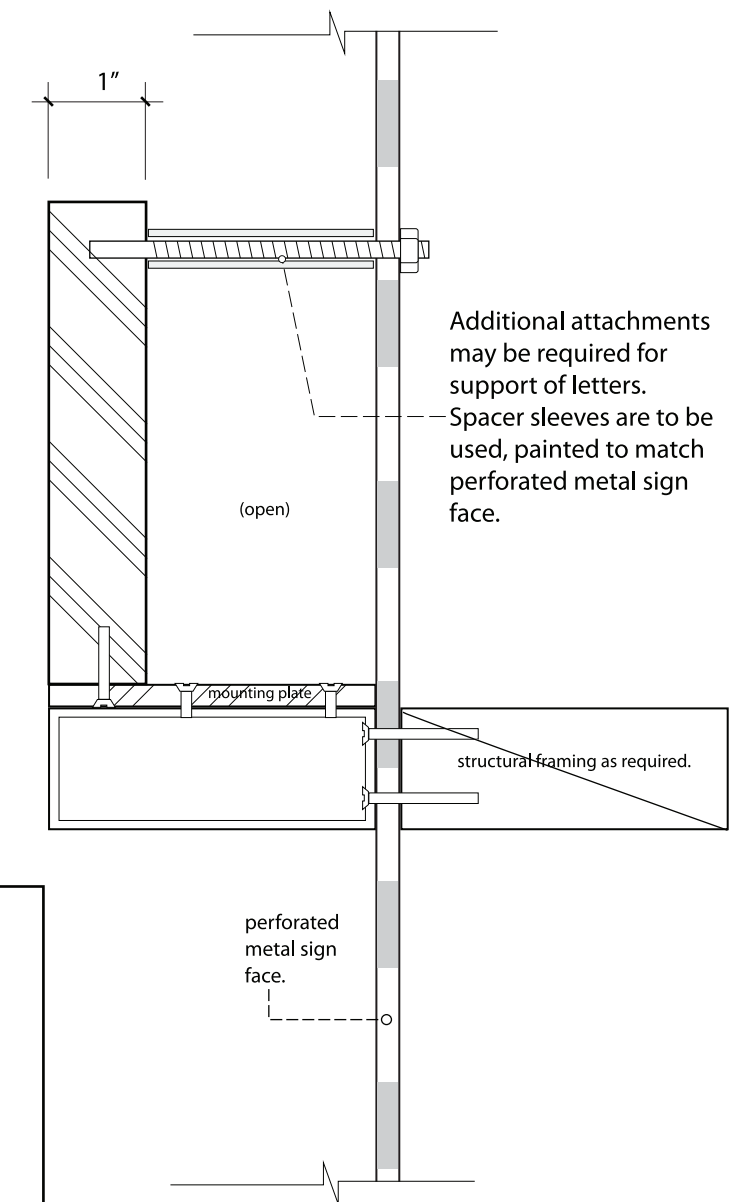
**F - STEEL SUPPORT POST;** or other as required as determined by project structural engineer.

**G - Interior back panel and sides,** painted bright white.



**A** VERTICAL SECTION THRU PYLON UPPER PORTION  
**1.02** Scale: 1 1/2" = 1'-0"

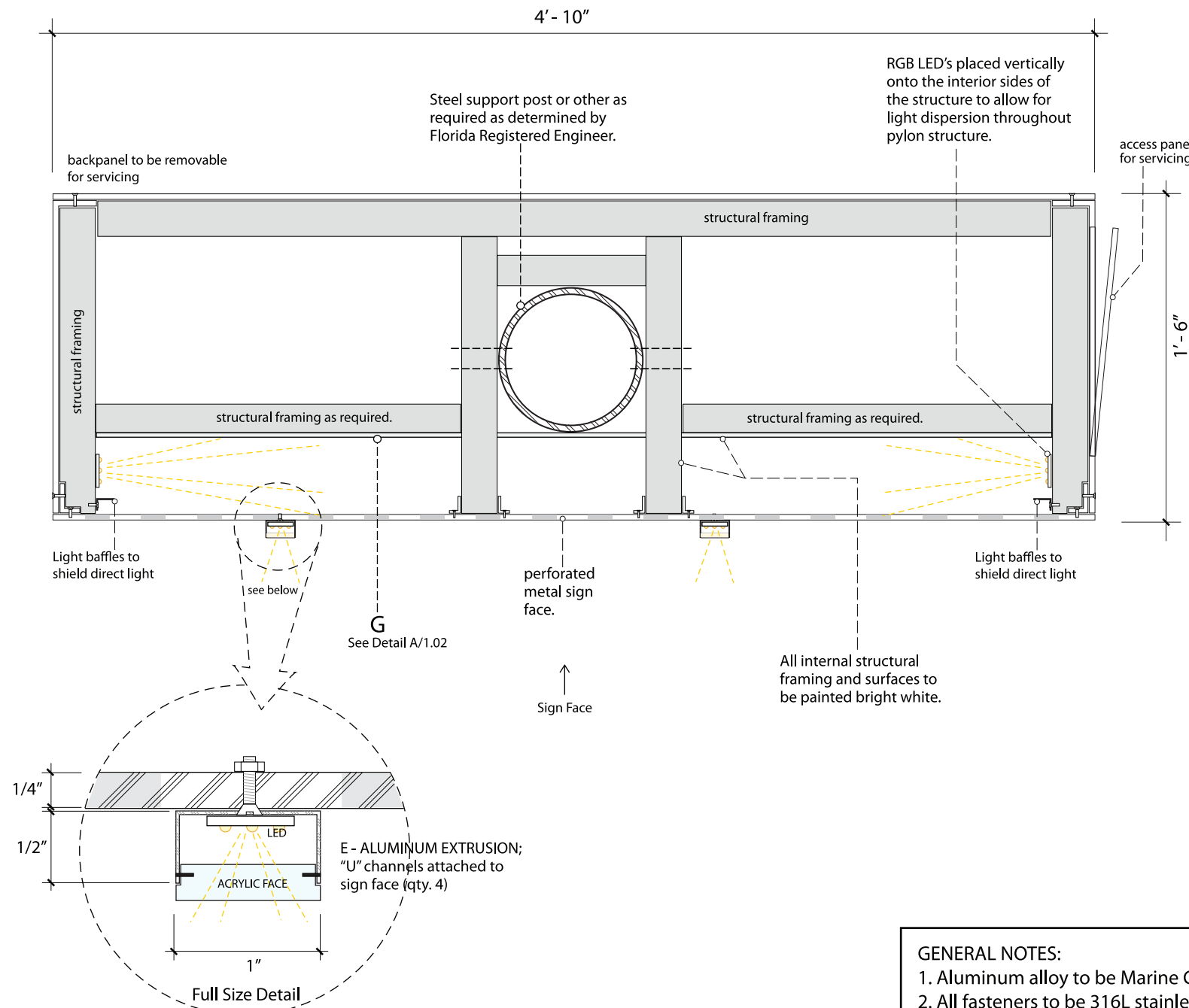
Sign letters are of 1" thick aluminum, painted as shown, and are attached to mounting plate (if necessary) and base bar.



**B** VERTICAL SECTION THRU LOWER SIGN LETTER NON-ILLUMINATED  
**1.02** Scale: HALF SIZE

**GENERAL NOTES:**

1. Aluminum alloy to be Marine Grade 5083.
2. All fasteners to be 316L stainless steel (no galvanized or raw steel).
3. The Sign Contractor is required to produce Shop Drawings for City's and designer's approval prior to fabrication and installation.
4. The Sign Contractor is required to produce one illuminated sign letter and LED light strips for City's and designer's review and comment of lighting of colors and fabrication method. City's and designer's approval will be required prior to fabrication/completion of Pylon.



**A** HORIZONTAL SECTION THRU PYLON LOWER PORTION  
**1.03** Scale: 1 1/2" = 1'-0"

**GENERAL NOTES:**

1. Aluminum alloy to be Marine Grade 5083.
2. All fasteners to be 316L stainless steel (no galvanized or raw steel).
3. The Sign Contractor is required to produce Shop Drawings for City's and designer's approval prior to fabrication and installation.
4. The Sign Contractor is required to produce one illuminated sign letter and LED light strips for City's and designer's review and comment of lighting of colors and fabrication method. City's and designer's approval will be required prior to fabrication/completion of Pylon.

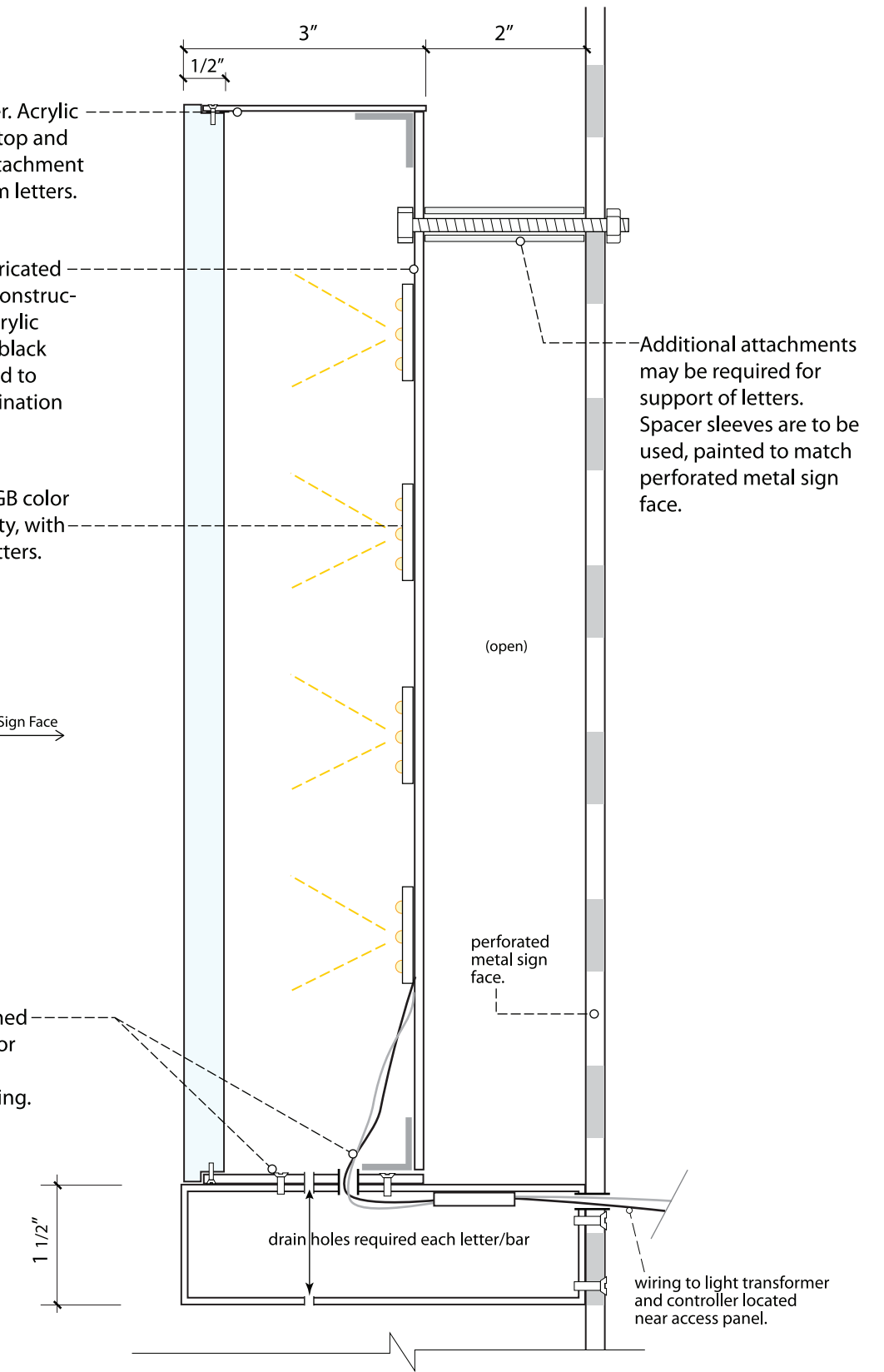
Shoulder cut sign letter. Acrylic face is notched out at top and bottom to allow for attachment of fabricated aluminum letters.

Sign letter, 3" deep fabricated of aluminum-welded construction. Letters contain acrylic faces with translucent black perforated vinyl applied to faces to allow for illumination through face.

Sign letters contain RGB color LED's for color flexibility, with face illumination of letters.

Sign Face →

Sign letters are attached to base bar to allow for support of letters to conceal electrical wiring.



**B** VERTICAL SECTION THRU SIGN LETTER  
**1.03** Scale: HALF SIZE



Colored graphics as shown with white background.

Logo graphic of translucent DIGITALLY PRINTED VINYL. Final Art Work will be provided by TGA Design to fabricator upon request.

Sign letters with black perforated 3M vinyl of face.

Sides of letters painted Mathews MAP Silver/Aluminum color to match pylon face.

Perforated aluminum face panel painted Mathews MAP Silver/Aluminum color. Sides and rear of Pylon painted to match sign face.

Horizontal base bars painted Mathews MAP Silver/Aluminum color on face, top, bottom and sides.

"HEART OF THE BAY" letters painted Mathews MP00853 Plastic Pumpkin color on face and sides.

**GENERAL NOTES:**

1. Aluminum alloy to be Marine Grade 5083.
2. All fasteners to be 316L stainless steel (no galvanized or raw steel).
3. The Sign Contractor is required to produce Shop Drawings for City's and designer's approval prior to fabrication and installation.
4. The Sign Contractor is required to produce one illuminated sign letter and LED light strips for City's and designer's review and comment of lighting of colors and fabrication method. City's and designer's approval will be required prior to fabrication/completion of Pylon.

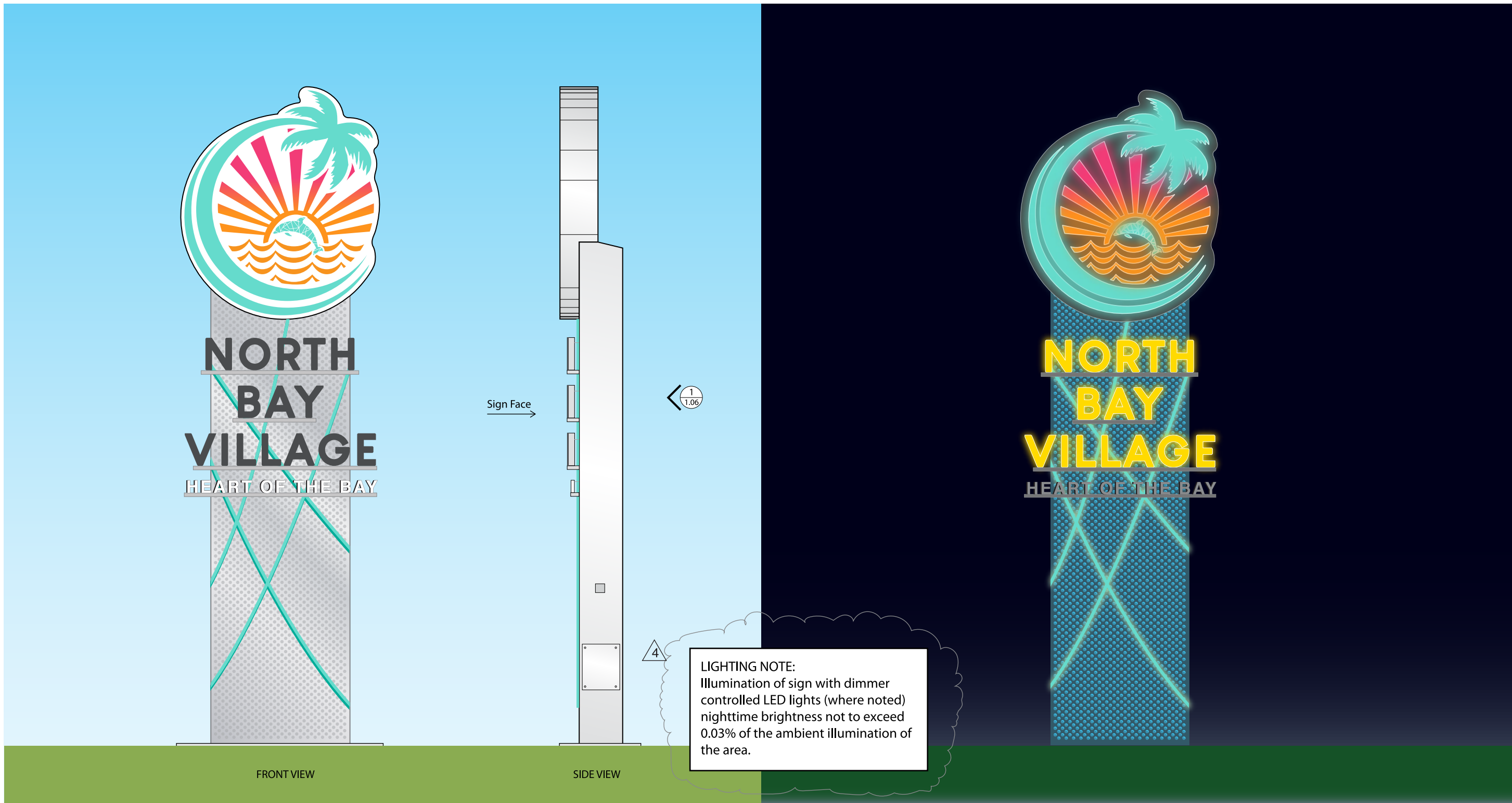


"U" channel aluminum extrusions to be painted Mathews MP11709 Perfect Gem color on face and all sides.

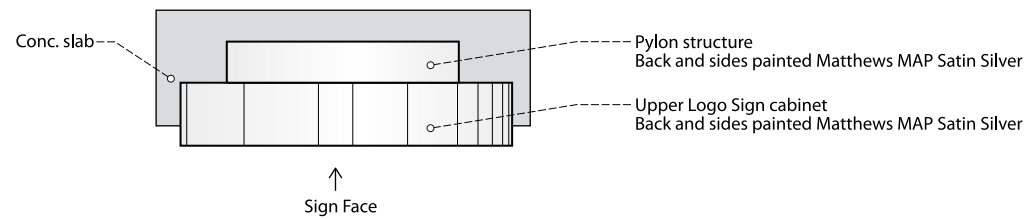
The face of the acrylic vinyl applied to the "U" channels must match the color specified above. Internal illumination to be WHITE LED's.

**1** PYLON COLORS  
**1.04** Not to Scale

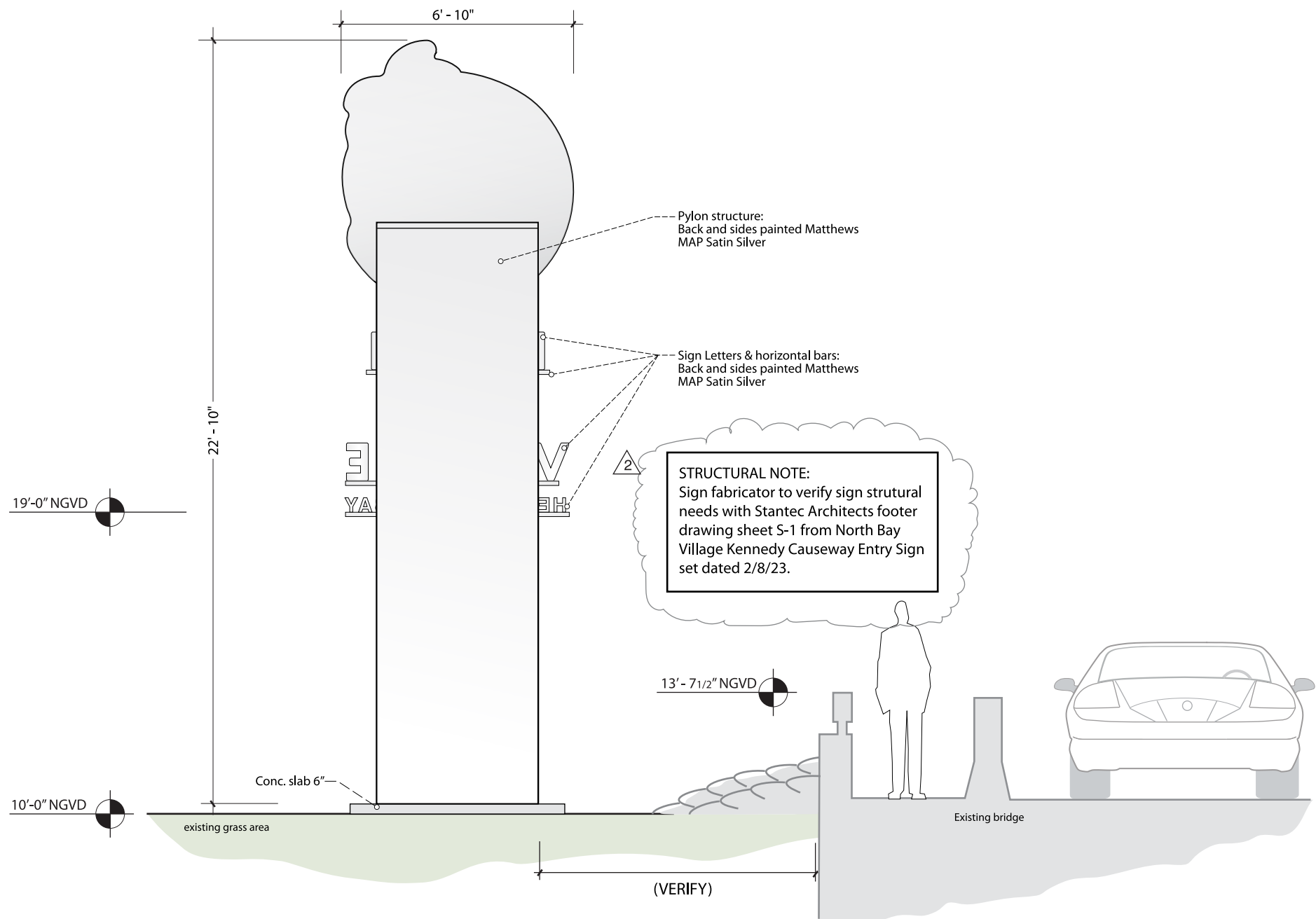
**2** "U" CHANNEL (alum. extrusion ) PATTERN & COLOR  
**1.04** Scale: 1/2" = 1' - 0"



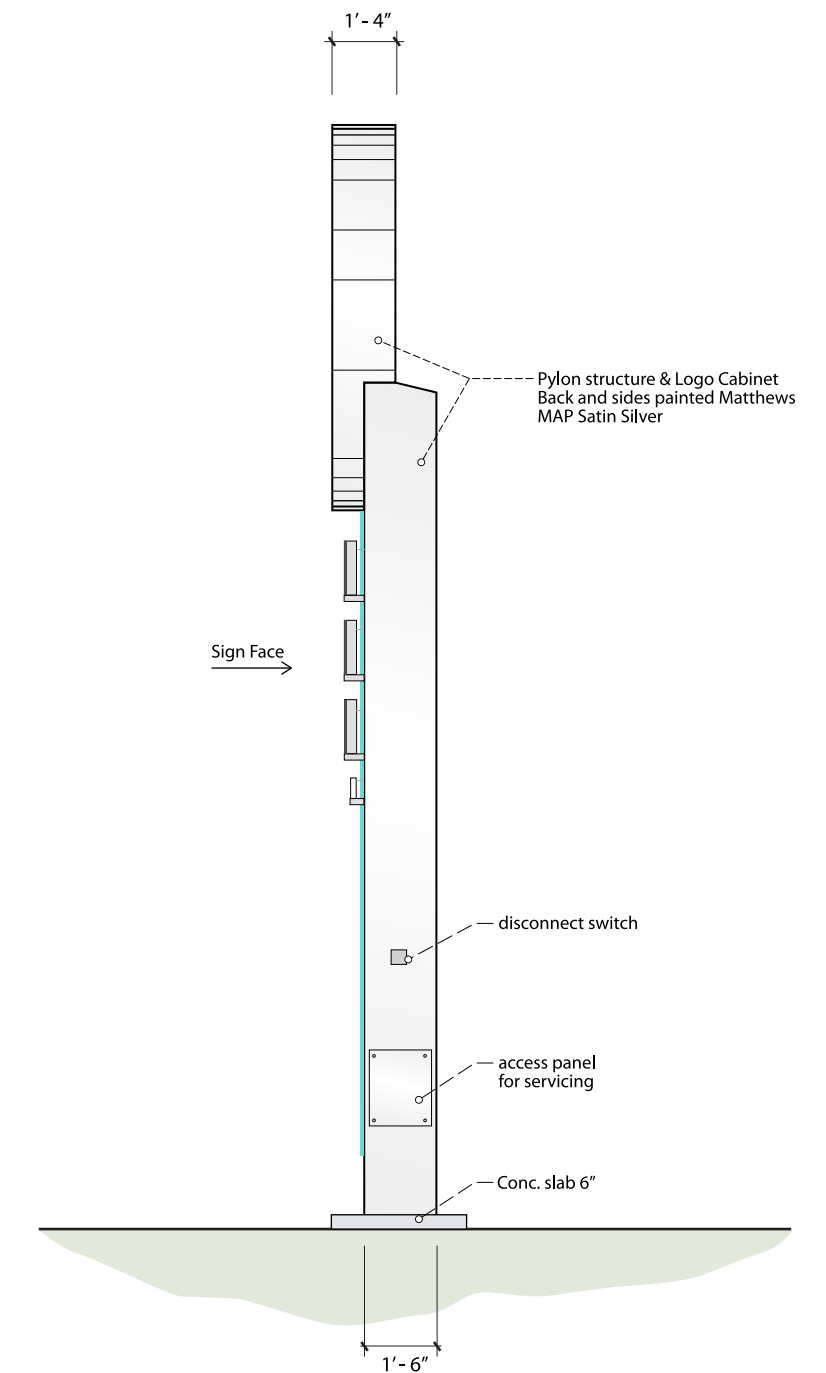
**1** PYLON COLORS - DAY & NIGHT RENDERINGS  
**1.05** Not to Scale



**3** TOP VIEW  
**1.06** Scale: 1/4" = 1'-0"



**1** WEST ELEVATION LOOKING EAST - ID PYLON AT BRIDGE - SINGLE FACED  
**1.06** Scale: 1/4" = 1'-0"



**2** NORTH ELEVATION - ID PYLON AT BRIDGE  
**1.06** Scale: 1/4" = 1'-0"