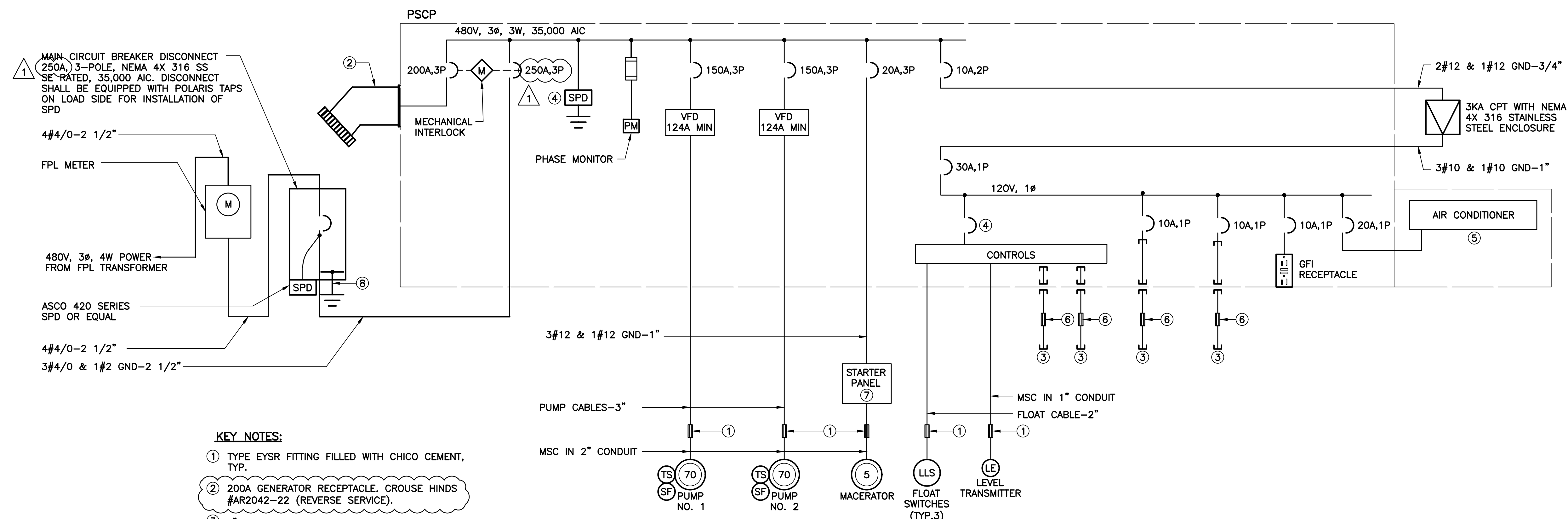




This document, together with the concept and design presented herein, as an instrument of service, is intended only for the specific purpose and client for which it was prepared. Reuse of and improper reliance on this document without written authorization and adaptation by Kimley-Horn and Associates, Inc. shall be without liability to Kimley-Horn and Associates, Inc.



- KEY NOTES:**
- ① TYPE EYSR FITTING FILLED WITH CHICO CEMENT, TYP.
  - ② 200A GENERATOR RECEPTACLE. CROUSE HINDS #AR2042-22 (REVERSE SERVICE).
  - ③ 1" SPARE CONDUIT FOR FUTURE EXTENSION TO VALVE BOX AND WETWELL.
  - ④ ASCO 430 SERIES.
  - ⑤ CONTROL PANEL CABINET SHALL BE AIR CONDITIONED. AIR CONDITIONER SHALL BE SIZED TO MAINTAIN PANEL TEMPERATURE AT 78°F WITH 1 PUMP OPERATING AT & 95°F AMBIENT. MINIMUM SIZE SHALL BE 12000 BTU.
  - ⑥ EMPTY EYSR FITTING.
  - ⑦ MACERATOR STARTER PANEL FURNISHED UNDER DIVISION 11.
  - ⑧ #2 BARE COPPER TO GROUND GRID

**LOAD TABULATION**  
SERVICE VOLTAGE: 480V, 3Ø

DESCRIPTION	LOAD	AMPACITY
① SUBMERSIBLE PUMPS	2 @ 70 HP EACH	= 162.00 AMPS
MACERATOR	1 @ 5 HP	= 7.60 AMPS
MISCELLANEOUS	3 KVA	= 3.60 AMPS
	<b>CONNECTED LOAD</b>	<b>= 173.20 AMPS</b>
② MINIMUM SERVICE ENTRANCE = 173.20 AMPS + (0.25)(81.00) = <b>193.45 AMPS</b>		

**NOTES:**

- ① AMPACITIES PER PUMP MFR. DATASHEETS.
- ② SERVICE ENTRANCE MINIMUM SIZE AS PER ARTICLE 230 OF THE NATIONAL ELECTRICAL CODE

SINGLE LINE DIAGRAM

No.	REVISIONS	DATE	BY
△	ADDENDUM NO. 6	03/09/22	SEB

**Kimley»Horn**

600 NORTH PINE ISLAND ROAD, SUITE 450, PLANTATION, FL 33324  
PHONE: 954-535-5100 FAX: 954-739-2247  
WWW.KIMLEY-HORN.COM CA 0000696

KHA PROJECT	043138041
DATE	MARCH 2022
SCALE	AS SHOWN
DESIGNED BY	SEB
DRAWN BY	SJL
CHECKED BY	SEB

**HISPANOLA WASTEWATER PUMP  
STATION IMPROVEMENTS**

PREPARED FOR  
**NORTH BAY VILLAGE**

NORTH BAY VILLAGE FLORIDA

LICENSED PROFESSIONAL

STEPHEN E. BAILEY, P.E.

FLORIDA LICENSE NUMBER  
42461

DATE: 5/14/2020

**SINGLE LINE DIAGRAM**

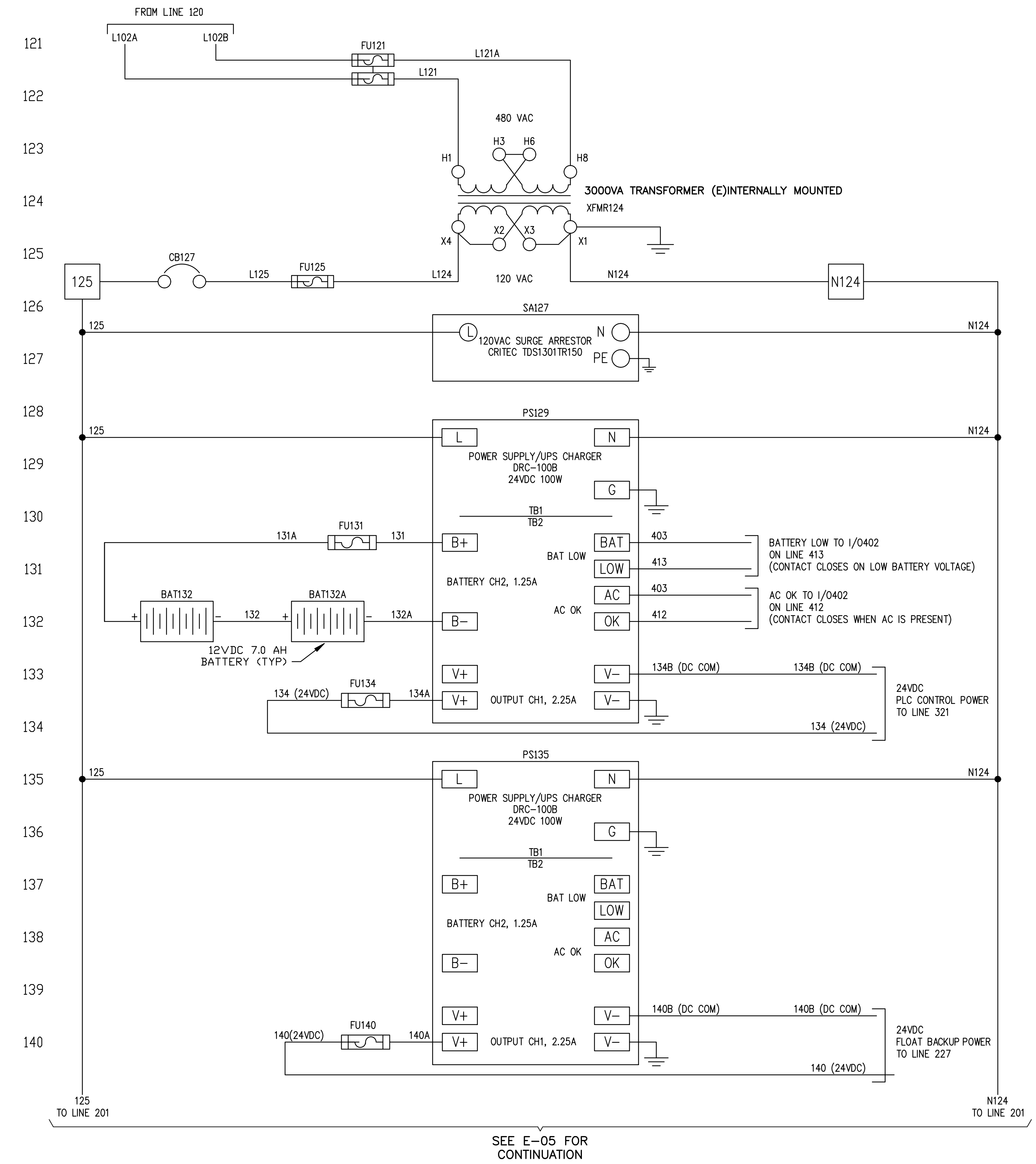
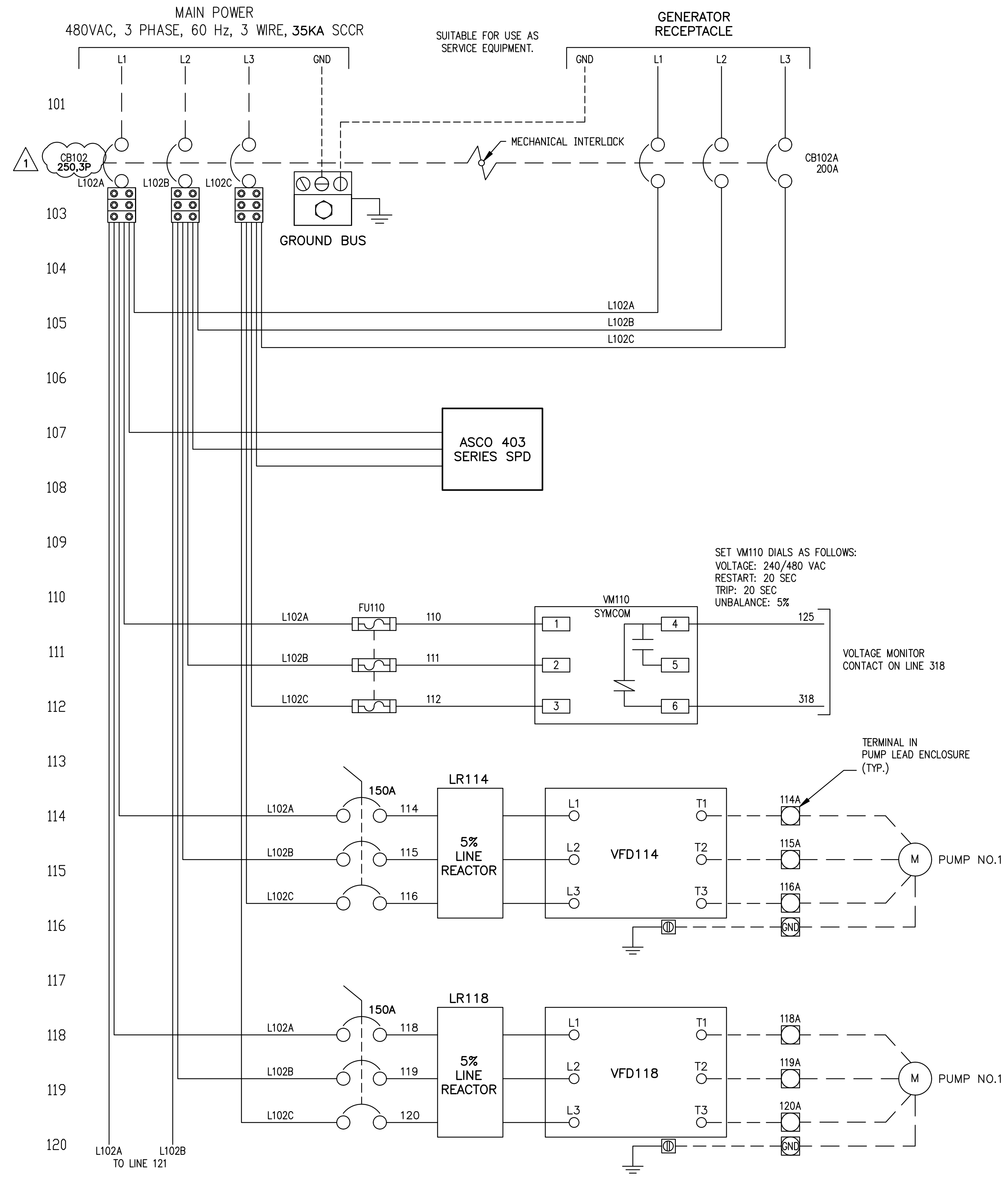
SHEET NUMBER  
**E-02**

10620 GRIFFIN ROAD, SUITE 202  
COOPER CITY, FLORIDA 33326  
PHONE: (954) 448-7930  
C.O.A. NO. 6783  
Stephen E. Bailey, P.E.  
Florida P.E. No. 42461

**811** KNOW WHAT'S BELOW  
ALWAYS CALL 811  
BEFORE YOU DIG  
It's fast. It's free. It's the law.  
www.callsunshine.com

X:\Active Projects\Kimley-Horn\North Bay Village Pump Station Upgrades\11\_Add 6\Hispanola Dwg\04\Panel ELEM DIA-1.dwg, 3/9/2022 5:07:26 PM, slg@khu

This document, together with the concepts and design presented herein, as an instrument of service, is intended only for the specific purpose and client for which it was prepared. Reuse of and improper reliance on this document without written authorization and adaptation by Kimley-Horn and Associates, Inc. shall be without liability to Kimley-Horn and Associates, Inc.



No.	REVISIONS	DATE	BY
1	ADDENDUM NO. 6	03/09/22	SEB

**Kimley»Horn**

600 NORTH PINE ISLAND ROAD, SUITE 450, PLANTATION, FL 33324  
PHONE: 954-535-5100 FAX: 954-739-2247  
WWW.KIMLEY-HORN.COM CA 0000696

KHA PROJECT	043138041
DATE	MARCH 2022
SCALE	AS SHOWN
DESIGNED BY	SEB
DRAWN BY	SJL
CHECKED BY	SEB

**HISPANOLA WASTEWATER PUMP STATION IMPROVEMENTS**

PREPARED FOR  
**NORTH BAY VILLAGE**

NORTH BAY VILLAGE FLORIDA

LICENSED PROFESSIONAL	STEPHEN E. BAILEY, P.E.
FLORIDA LICENSE NUMBER	42461
DATE	5/14/2020

**CONTROL PANEL ELEMENTARY DIAGRAM - SHEET 1**

SHEET NUMBER	E-04
--------------	------

10620 GRIFFIN ROAD, SUITE 202  
COOPER CITY, FLORIDA 33326  
PHONE: (954) 448-7930  
C.O.A. NO. 6783  
Stephen E. Bailey, P.E.  
Florida P.E. No. 42461

**ENGINEERED CONSULTANTS**

**811** KNOW WHAT'S BELOW ALWAYS CALL 811 BEFORE YOU DIG  
It's fast. It's free. It's the law.  
www.callsunshine.com

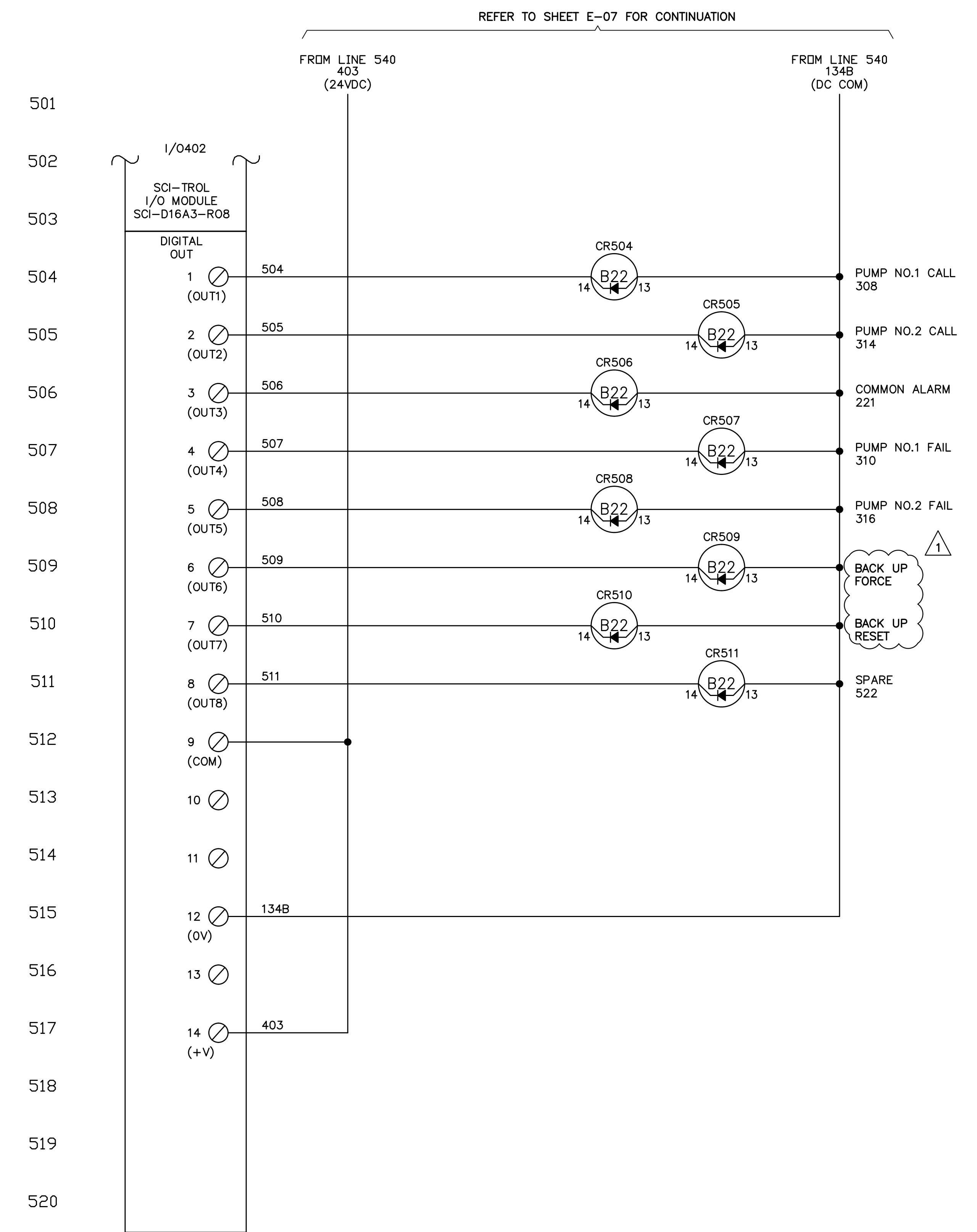
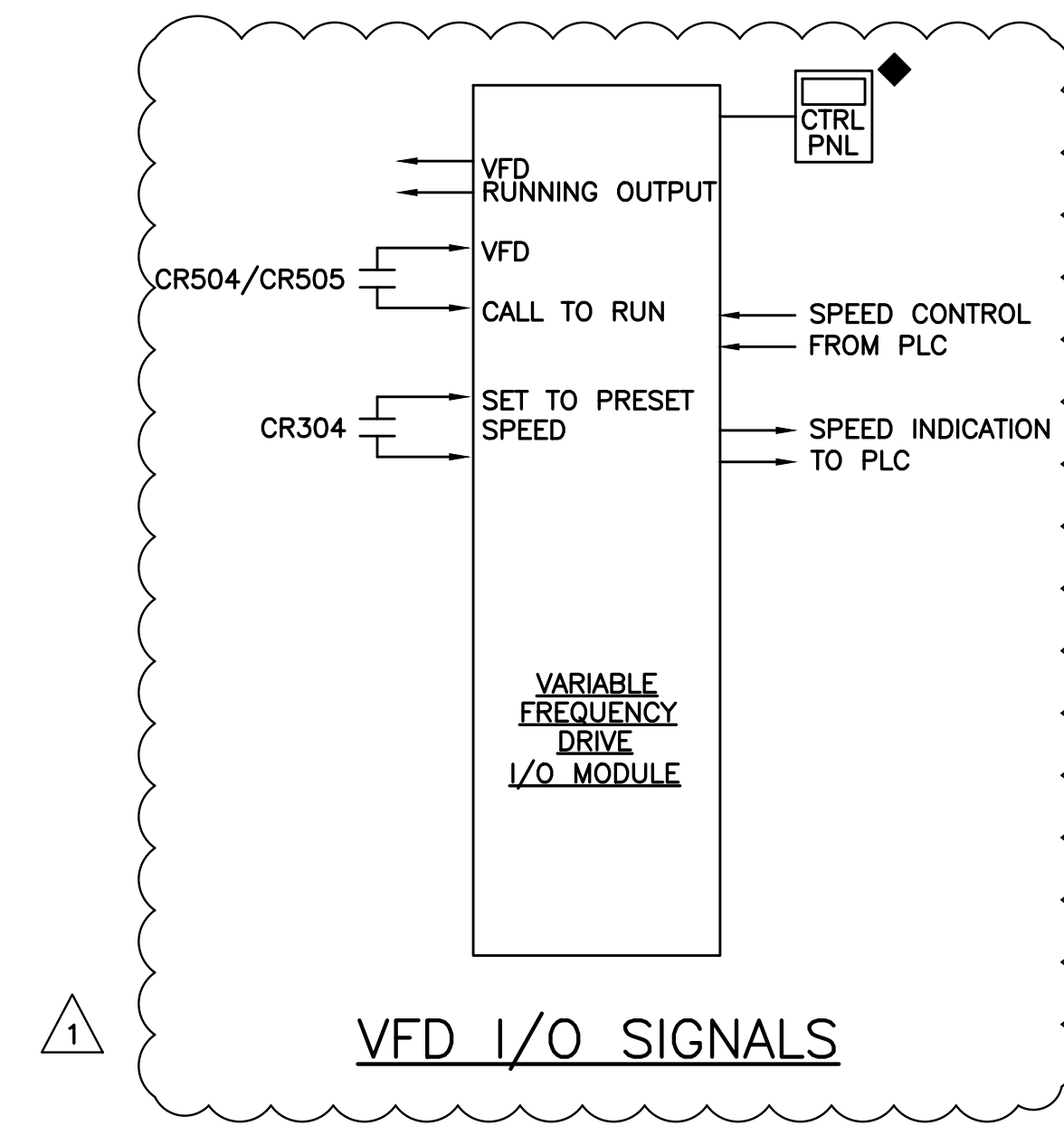






X:\Active Projects\Kimley-Horn\North Bay Village Pump Station Upgrades\11\_Add 6\Hispanola Dwg\09\03\2022\507-46 PNL.dwg, 3/9/2022 5:07:46 PM, slg@kha.com

This document, together with the concepts and designs presented herein, is intended only for the specific purpose and client for which it was prepared. Reuse of and improper reliance on this document without written authorization and adaptation by Kimley-Horn and Associates, Inc. shall be without liability to Kimley-Horn and Associates, Inc.



No.	REVISIONS	DATE	BY
1	ADDENDUM NO. 6	03/09/22	SEB

**Kimley»Horn**

600 NORTH PINE ISLAND ROAD, SUITE 450, PLANTATION, FL 33324  
 PHONE: 954-535-5100 FAX: 954-739-2247  
 WWW.KIMLEY-HORN.COM CA 0000696

KHA PROJECT	043138041
DATE	MARCH 2022
SCALE	AS SHOWN
DESIGNED BY	SEB
DRAWN BY	SJL
CHECKED BY	SEB

**HISPANOLA WASTEWATER PUMP STATION IMPROVEMENTS**

PREPARED FOR  
**NORTH BAY VILLAGE**

NORTH BAY VILLAGE FLORIDA

LICENSED PROFESSIONAL  
**STEPHEN E. BAILEY, P.E.**

FLORIDA LICENSE NUMBER  
 42461

DATE: 5/14/2020

**CONTROL PANEL ELEMENTARY DIAGRAM - SHEET 5**

SHEET NUMBER  
**E-08**

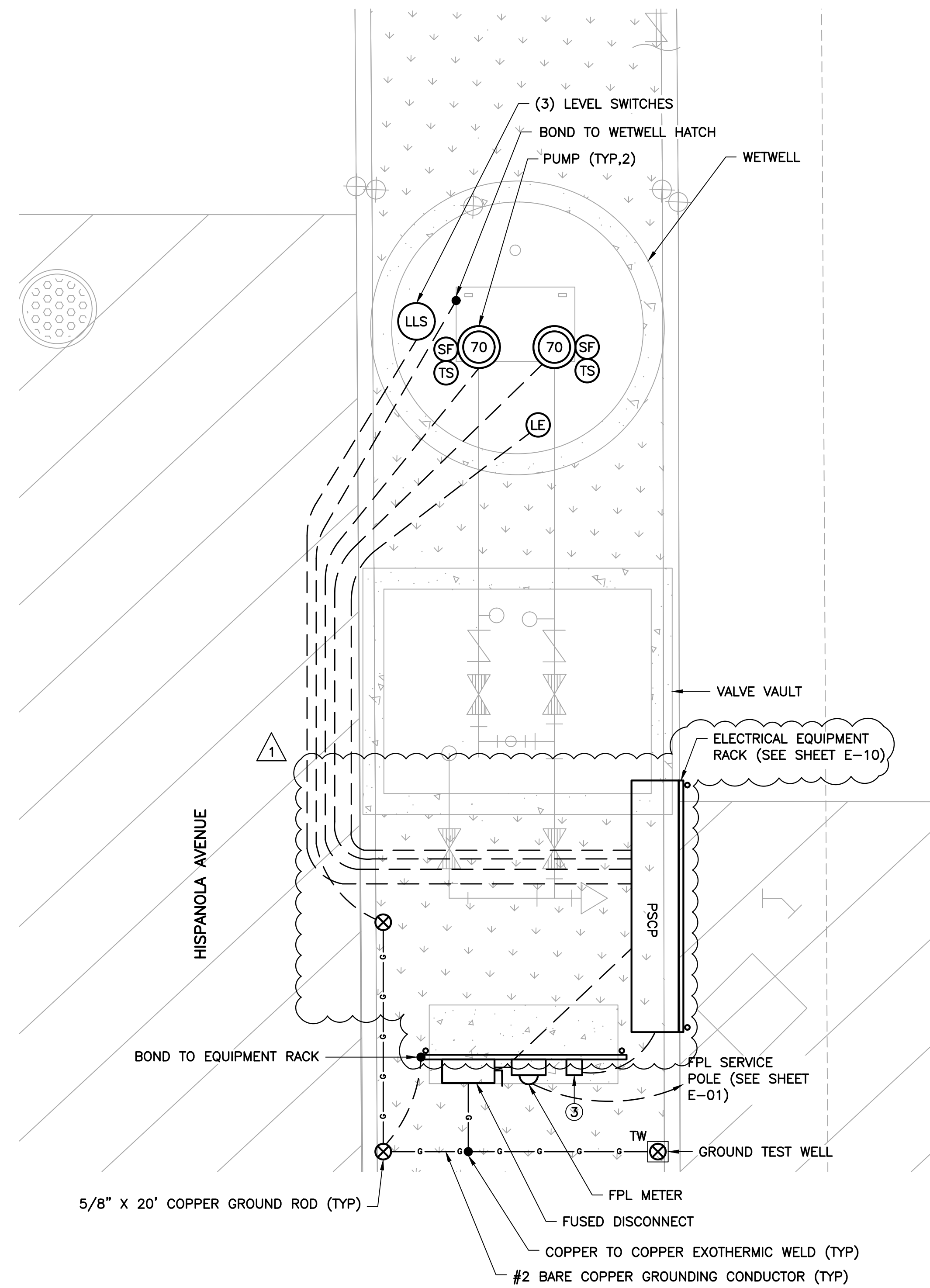
10620 GRIFFIN ROAD, SUITE 202  
 COOPER CITY, FLORIDA 33326  
 PHONE: (954) 448-7930  
 C.O.A. NO. 6783  
 Stephen E. Bailey, P.E.  
 Florida P.E. No. 42461

**BAILEY ENGINEERING CONSULTANTS**

**811** KNOW WHAT'S BELOW ALWAYS CALL 811 BEFORE YOU DIG  
 It's fast. It's free. It's the law.  
 www.callsunshine.com

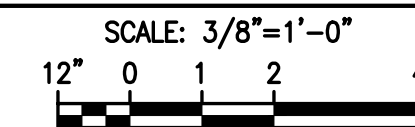
X:\Active Projects\Kimley-Horn\North Bay Village Pump Station Upgrades\11\_Add 6\Hispanola Dwg\09\p\A-E-09 PLAN VIEW.dwg, 3/9/2022, 5:07:53 PM, slg@khu

This document, together with the concepts and design presented herein, as an instrument of service, is intended only for the specific purpose and client for which it was prepared. Reuse of and improper reliance on this document without written authorization and adaptation by Kimley-Horn and Associates, Inc. shall be without liability to Kimley-Horn and Associates, Inc.

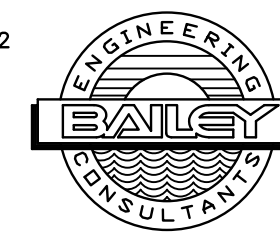


- NOTES:**
- ① REFER TO DETAILS FOR HAZARDOUS AREA CLASSIFICATIONS. USE APPROPRIATE MATERIALS AND WIRING METHODS.
  - ② BONDING CONNECTIONS BETWEEN ELECTRODE, REBAR AND PIPING SHALL BE EXOTHERMIC.
  - ③ CPT

**PUMP STATION ELECTRICAL PLAN VIEW**



10620 GRIFFIN ROAD, SUITE 202  
 COOPER CITY, FLORIDA 33326  
 PHONE: (954) 448-7939  
 C.O.A. NO. 6783  
 Stephen E. Bailey, P.E.  
 Florida P.E. No. 42461



No.	REVISIONS	DATE	BY
Δ	ADDENDUM NO. 6	03/07/22	SEB

**Kimley»Horn**

600 NORTH PINE ISLAND ROAD, SUITE 450, PLANTATION, FL 33324  
 PHONE: 954-535-5100 FAX: 954-739-2247  
 WWW.KIMLEY-HORN.COM CA 0000696

KHA PROJECT	043138041
DATE	MARCH 2022
SCALE	AS SHOWN
DESIGNED BY	SEB
DRAWN BY	SJL
CHECKED BY	SEB

**HISPANOLA WASTEWATER PUMP STATION IMPROVEMENTS**

PREPARED FOR  
**NORTH BAY VILLAGE**

NORTH BAY VILLAGE FLORIDA

LICENSED PROFESSIONAL  
 STEPHEN E. BAILEY, P.E.  
 FLORIDA LICENSE NUMBER  
 42461  
 DATE: 5/14/2020

**PUMP STATION ELECTRICAL PLAN VIEW**

SHEET NUMBER  
**E-09**